

September

KOKA

英語版広報 こうか9月号



About Heisei 31 (2019) Applications for Nursery School (Hoikuen)

Nursery School applications for the Heisei 31 school year will begin soon! Please be careful as application procedures for admission to nursery school differ depending on the facility.

Application forms will be available starting September 3rd (Mon).

Application Period

October 1st (Mon) to October 12th (Fri)

(Not including Saturdays, Sundays, or holidays)

Where to Apply

If already enrolled in a school: Apply directly to the currently enrolled school or your 1st choice school.

New Applicants: Apply directly to your 1st choice school (Also includes those on the waitlist from Heisei 30).

※Those who cannot apply directly to nursery schools for unavoidable reasons, or those who need a translation should apply at Hoiku Yochien Ka at Koka City hall or at any of the following Chiiki Shimin Centers: Tsuchiyama, Koka-Ohara, Konan Daiichi, or Shigaraki.
(Weekdays from 8:30AM to 5:15PM)

Application Times

Operating times of the applying nursery school (usually 8:30AM to 6:00PM)

※However, if you cannot make these times, you can apply to Hoiku Yochien Ka at Koka City hall at the following times:

-October 2nd (Tue) or October 9th (Tue) from 5:15PM to 7:00PM

Who Can Apply

Guardians who cannot take care of their children at home due to work, illness, etc.

Both the guardian(s) and child(ren) must be residents of Koka City in order to apply.

Necessary Documents

-Nursery School Admission Application (Nyu-En Moshikomisho)

-Certificate of Need of Childcare

(All necessary documents can be found at each nursery school, Hoiku Yochien Ka at Koka City Hall, or at the following Chiiki Shimin Centers: Tsuchiyama, Koka-Ohara, Konan Daiichi, or Shigaraki.



※Important Notes※

- Children currently enrolled in nursery school must reapply to continue attending next year.
- Those who were put on the waitlist for nursery school last year must also reapply for next year.
- To those who are on Childcare Leave: If you wish to return to work and put your child(ren) into nursery school in the middle of the next school year, you need to apply during this application period. Mothers of children who are not yet born can also apply if they wish to enter their child into nursery school next year.
- If a nursery school receives too few applicants, there may be an admission adjustment or a temporary closure of the school.
- If you wish to admit your child to a nursery school outside of Koka City, please contact Hoiku Yochien Ka at Koka City hall (2nd floor).



List of Nursery Schools

※Age is as of April 1st, 2019

Facility	Age	Capacity
Minakuchi Higashi Hoikuen	1 - 5 yrs	120
Minakuchi Nishi Hoikuen	6 mo - 5 yrs	180
Bantani Hoikuen	6 mo - 5 yrs	220
Iwagami Hoikuen	6 mo - 5 yrs	100
Kashiwagi Hoikuen	6 mo - 5 yrs	160
Minakuchi Kita Hoikuen	6 mo - 5 yrs	180
Kibukawa Nintei Kodomoen (Long-hours)	6 mo - 5 yrs	235
(Small scale) Minakuchi Yochien Hidamari	0 - 2 yrs (2 years olds have priority)	5
(Small-scale) Pono Pono Club	1 - 2 yrs	5
Tsuchiyama Hoikuen (Tsuchiyama Niko Niko En)	6 mo - 5 yrs	◎
Ono Hoikuen	2 - 5 yrs	68
Koka Nishi Hoikuen	6 mo - 5 yrs	110
Koka Kita Hoikuen	2 - 5 yrs	50
Koka Higashi Hoikuen (Ohara Niko Niko En)	2 - 5 yrs	◎

Facility	Age	Capacity
Koka Nishi Hoikuen Minami-bun En (Aburahi Niko Niko En)	2 - 5 yrs	◎
Konan Higashi Hoikuen	2 - 5 yrs	70
Konan Kita Hoikuen	3 - 5 yrs	60
Konan Nishi Hoikuen	6 mo - 5 yrs	62
Konan Minami Hoikuen	2 - 5 yrs	60
Konan Kibogaoka Hoikuen	6 mo - 5 yrs	120
Konan Nozomi Hoikuen	6 mo - 5 yrs	160
Konan Hoikuen	6 mo - 2 yrs	60
Shigaraki Hoikuen (Shigaraki Niko Niko En)	1 - 5 yrs	◎
Kumoi Hoikuen	6 mo - 5 yrs	80
Asamiya Hoikuen	2 - 5 yrs	26
Tarao Hoikuen	Temporarily Closed	
Meisho Hoikuen	6 mo - 5 yrs	80

◎ = Nursery schools that are combined with kindergartens. For capacity, please see "Registration for Public Kindergartens."



**You cannot apply for both nursery school and public kindergartens at the same time!
(one application per child)**



Registration for Private Kindergartens (for more details, please see the August issue)

Facility	Minakuchi Yochien	Konan Yochien	Kibukawa Nintei Kodomoen (short hours)
Application Period	Start from Sept. 12th (Wed) 9:30AM ~ (First come first served)	Currently receiving applications (First come first served) *Possible lottery system	Currently receiving applications (First come first served)
Applications / Questions	Gakko Hojin Omi Seisho Gakuen Minakuchi Yochien Minakuchi-cho, Joto 3-21 TEL 0748-62-0329 FAX 0748-62-0334	Gakko Hojin Morishima Gakuen Konan Yochien Konan-cho, Noda 604 TEL 0748-86-8088	Gakko Hojin Morishima Gakuen Kibukawa Nintei Kodomoen Minakuchi-cho, Sandaiji 2100 TEL 0748-62-8188 FAX 0748-62-7808

※For more information, please contact each kindergarten directly.

※For kindergartens already accepting applications, please contact the kindergarten directly for application status.

Registration for Public Kindergartens (Yochien)

Application Period

September 12th (Wed) to September 14th (Fri)

Where to Apply

At the kindergarten of your choice

Application Times

8:30AM to 5:15PM

※If you cannot make these times, please apply to Hoiku Yochien Ka at Koka City Hall (second floor) on September 18th (Tue) or September 19th (Wed) from 8:30AM to 5:15PM



Necessary Documents

-Application Form (can be received at the kindergartens, any Kosodate Shien Center, Hoiku Yochien Ka at Koka City Hall, or any of the following Chiiki Shimin Centers: Tsuchiyama, Koka-Ohara, Konan Daiichi, or Shigaraki)

※Important Notes!

- Both the guardians and child must be residents of Koka City in order to apply.
- For children already enrolled in a kindergarten, the application will be given to you by the school.
- For those who were waitlisted in the Heisei 30 (2018) school year, you must reapply for the Heisei 31 (2019) school year.
- If there are too many applicants, those admitted will be determined by a lottery system. In this case, you will be contacted by mail with the date and time.

Facility	Age	Capacity
Bantani Yochien	3 - 5 yrs	160
Tsuchiyama Yochien (Tsuchiyama Niko Niko En)	3 - 5 yrs	◎
Ohara Yochien (Ohara Niko Niko En)	3 - 5 yrs	◎
Aburahi Yochien (Aburahi Niko Niko En)	3 - 5 yrs	◎
Shigaraki Yochien (Shigaraki Niko Niko En)	3 - 5 yrs	◎

※Age is as of
April 1st, 2019.

= Kindergartens that are combined with nursery schools, usually referred to as “Niko Niko En”. Both the kindergarten and the nursery school share the same facility, but applications are separated.

Tsuchiyama Niko Niko En-----111 children
Ohara Niko Niko En-----72 children

Aburahi Niko Niko En-----55 children
Shigaraki Niko Niko En-----106 children

Inquiries: Hoiku Yochien Ka TEL 0748-69-2180 FAX 0748-69-2298

Morishima Gakuen's Asobi no Hiroba "Tanpopo"

Morishima Gakuen (Konan Nursery School and Kibukawa Nintei Kodomoen) provides a place for children who are not yet in nursery school or kindergarten and their guardians to play once a month. Asobi no Hiroba "Tanpopo" not only gives the children a place to play and learn, but it also gives the guardians a chance to learn more about childcare.

The next Asobi no Hiroba "Tanpopo" will be:

At Konan Nursery School: September 6th (Thr), 10AM - around 11AM

At Kibukawa Nintei Kodomoen: September 12th (Wed), 10AM – around 11AM

Contents:

Konan Nursery School: "Let's have fun while playing and finding colors!"

Kibukawa Nintei Kodomoen: "Children's Reading" Story time with a picture book read by a library staff member

Target: Children who have not yet entered kindergarten/nursery school and their guardians

~NO RESERVATION NECESSARY~



Inquiries:

Konan Yochien: TEL 0748-86-8088

HP: <http://www.eonet.ne.jp/~kounanyouchien/>

Facebook: <https://www.facebook.com/kounanyouchien/>

Kibukawa Nintei Kodomoen:

TEL 0748-62-8188 FAX 0748-62-7008

Come Play at Minakuchi Kindergarten!

If you want a place to play with your child and want to know more about Minakuchi kindergarten, come and play with us!

When: September 6th, 20th

October 25th

November 1st, 22nd

December 6th

(All on Thursdays)

Time: From 9:15AM to 11:15AM

Target: Children who have not yet entered kindergarten and their guardians

Contents: Playing at Minakuchi Kindergarten, crafting, parent-child play, songs, snacks, etc.

How to Apply: By phone or by email.



Inquiries: Minakuchi Kindergarten

TEL 0748-62-0329 FAX 0748-62-0334

HP: <http://www.minakuchi.jp/youchien>

E-mail: youchienn@minakuchi.jp

Facebook: <https://www.facebook.com/minakuchiyouchien/>

Let's Think About Vacant Houses Before It's Too Late!

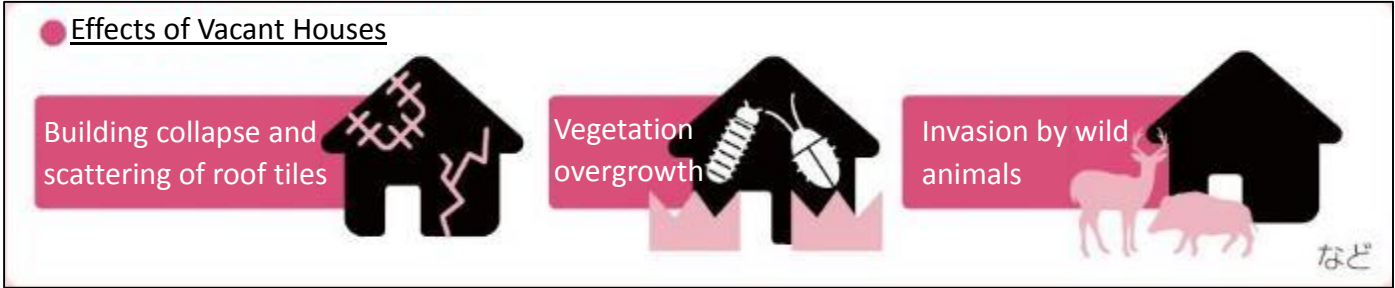
In recent years, there has been an increase in the number of vacant houses which have caused serious effects on the local community environment. Sometimes, damages caused by leaving a house unattended result in the owners of those properties having to pay community repair costs. Before this happens, let's find a solution together!

Results of a survey given to vacant house owners:

- Q. Have you thought about using your vacant house?
- Yes, I have thought about it. ----- **49.5%**
 - No, I haven't thought about it. ----- **42.8%**

Why can't you use your vacant house?

I can't throw away or get rid of Buddhist altars and other household goods. ----- **30.4%**



If you are worried about your vacant house, please consult us!

In Koka City, there is a general consultation window for vacant houses. We are working on prevention, utilization, and proper management of vacant houses.

Vacant House Bank System

We manage a "Vacant House Bank System" that keeps a list of people who want to sell or lease their vacant houses. We then provide that information to potential buyers or renters. If you have a vacant house to sell or lease, or if you are looking to buy or rent a vacant house, please register.

Legal Consultation on Inheritance

According to a national survey, acquiring a house through inheritance is the most common reason for vacant houses. In order to prevent this, we will hold legal consultations about inheritance.

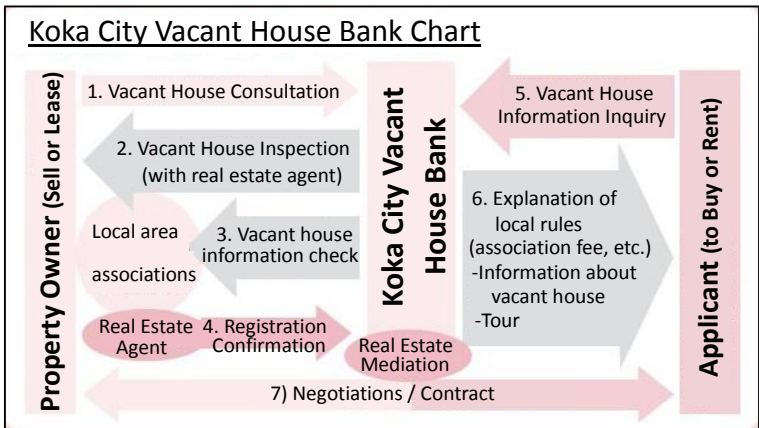
- Date:** October 14th (Sun)
 November 11th (Sun)
 9:30AM to 12:00PM
 ※Reservation needed
 (5 groups per day)

Place: Koka City Hall

How to Apply: By phone or fax below

In Collaboration With:

- Shiga-ken Shiho Shoshikai,
- Kinki Zeirishikai
- Shiga Bengoshikai



About Proper Management of Vacant Houses

Vacant house management is the responsibility of the property owner. For those who cannot manage the property themselves, there are management services available.

Feel free to contact us below for more information

Inquiries: Jutaku Kenchiku Ka
 TEL 0748-69-2214 FAX 0748-63-4601



September Events & Information



Omiya Gomori Fire Festival

Shigaraki Ceramics Festival



A fire festival held at Aburahi Jinja in homage to the local god. Over 1,000 plates of oil are lit up and kept burning until midnight.

Date: September 13th (Thr)

Time: 6:30 PM to 9:00PM

Location: Aburahi Jinja (Koka-shi, Aburahi 1042)



Inquiries: Aburahi Jinja
TEL 0748-88-2106

Date: October 6th (Sat) to October 8th (Mon)

Time: 9:00AM to 5:00PM (October 8th: 9:00AM to 4:00PM)

Location: Various locations near Shigaraki Chiiki Shimin Center

Contents: Pottery, of course, Koka's local goods, a food corner, and lots of fun! Special shopping tickets only found here will also be sold. **October 6th: fireworks show

Access: From the JR Kusatsu Line Kibukawa Station, take the Shigaraki Kohgen Tetsudo to Shigaraki Station.

Inquiries:

Toto/Shigaraki Matsuri Jiko linkai
(Shigarakiyaki Shinko Kyogi Kai)
TEL 0748-83-1755 FAX 0748-83-1756

Heisei 30 Housing and Land Statistics Survey



A housing and land statistics survey will be conducted on October 1st. This is the most fundamental and important survey on housing as it covers approximately 3.7 million households nationwide. During the investigation period, statisticians will visit target households and distribute survey documents. Answers to the survey can be submitted by mail or online.

Thank you for your understanding and cooperation.

Inquiries: Somu Ka TEL 0748-69-2120 FAX 0748-63-4086

Tokaido 30km & 15km Walk

Date: October 14 (Sun) (rain or shine)

Application Deadline: September 14th (Fri)

Capacity: 500 people (Participants under 18 years of age must be accompanied by a guardian)

Participation Fee: 30km - Adult: 4,000 yen, Child: 1,000 yen 15km - Adult: 3,000 yen, Child: 500 yen

Meeting Place: Michi-no-Eki Aino Tsuchiyama

30km Sign-in: 7AM

15km Sign-in: 10AM

※After signing in, you will take a shuttle bus to the start of the walk



Inquiries & Applications:

Tokaido Roman Hoko Jikko linkai
TEL 080-9169-1499 Homepage: <http://www.toukaidou.net>



Koga-Ryu Nin Nin Fireworks Rescheduled!

Date: September 29th (Sat)

Time: 7:45PM to 8:30PM

Location: By the side of the Yasu River (near Minakuchi-bashi [bridge])

Contents: An event unique to Koka City with "Ninjaemon" fireworks.



For more information, please see the "Koga-ryu Nin Nin Fireworks" page on the Koka-shi Kanko Guide homepage.

In the event of rain, this event will be cancelled

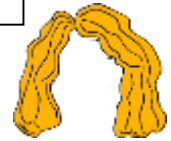
Inquiries:

Koga-Ryu Nin Nin Daihanabi Jikko linkai (Koka-shi Kanko Kyokainai)

TEL 0748-602690



Grant for Purchasing a Cancer Wig



To support those receiving cancer treatments, the city will subsidize part of the cost of purchasing a wig.

Applicants: Those who are:

Residents of Koka City

Currently receiving cancer treatment, have received cancer treatment in the past, or diagnosed with possible cancer and have bought a wig to deal with alopecia caused by side effects from cancer drug therapy (this includes fees incurred from hats, nets, or other material costs used to protect the skin)

Grant Amount: Up to 10,000 yen for wigs purchased after April 1st, 2018. (One time only)

Inquiries: Sukoyaka Shien Ka TEL 0748-69-2168 FAX 0748-63-4085

Koka Kominkan Courses

Each Kominkan throughout Koka City offers various lifelong learning courses.

For more information about each course, please contact the Kominkan in charge.

Course Name	Date & Time	Location & Applications	Times	Target & Capacity	Fees & Materials	Application Period
<u>Planting Season "Autumn"</u>	Oct. 14th 1:30PM to 3:30PM	Tsuchiyama Chuo Kominkan	1 time	Those 20 years old or older who work, live, or study in Koka City <u>Capacity:</u> 20 people	<u>Fee:</u> 1,500 yen <u>Bring:</u> A garden pot (20-25 cm in diameter, 15cm deep), apron, gloves, drinks *Those who need a pot please pay a separate 350 yen fee	Sept. 18th (Tue) to Sept. 29th (Sat)
<u>Leather Craft Class</u>	Oct. 27th 10:00AM to 12:00PM	Tsuchiyama Chuo Kominkan	1 time	Those 20 years old or older who work, live, or study in Koka City <u>Capacity:</u> 20 people	<u>Fee:</u> 2,000 yen <u>Bring:</u> Fee payment, drinks	Sept. 18th (Tue) to Sept. 29th (Sat)

Inquiries & Applications:

Minakuchi Chuo Kominkan	TEL 0748-62-0488	FAX 0748-62-3338
Kafuka Shogai Gakushu Kan	TEL 0748-88-4100	FAX 0748-88-5055
Shigaraki Chuo Kominkan	TEL 0748-82-8075	FAX 0748-82-2463
Konan Kominkan	TEL 0748-86-3036	FAX 0748-86-8119
Tsuchiyama Chuo Kominkan	TEL 0748-66-0158	FAX 0748-66-0158

September Taxes (9 がつ の ぜい きん)

- National Health Insurance Tax 国民健康保険税 (こくみんけんこうほけんぜい)
- Nursery School Fee 保育料 (ほいくりょう)
- Kindergarten Fee 幼稚園使用料 (ようちえんしょうりょう)
- Nursing Care Insurance Fee 介護保険料 (かいごほけんりょう)
- Late-Stage Elderly Medical Insurance Fee 後期高齢者医療保険料 (こうきこうれいしやいりょうほけんりょう)
- Water Fee 水道料金 (すいどうりょうきん)
- Sewerage fee 公共下水道使用料 (こうきょうげすいどうしょうりょう)
- Agricultural Sewage fee 農業集落排水使用料 (のうぎょうしゅうらくはいすいしょうりょう)

Due date for tax payments:
October 1st (Mon)

CLASSES FOR NEW MOTHERS -- SEPTEMBER

Offered to parents of 2 to 3-months old infants. This class aims to provide information on child development, hazard prevention, vaccinations, and mother's health management. A mixer will be held as well.

No reservation is required.

Eligibility	Parents with 2- to 3-months-old infant(s)
Time	10:00 to 11:30am (Check-in from 9:45am to 10:00am)
Things to Bring	Maternity record book, the Health Check Calendar, a bath towel, the Sukoyaka Set you received upon submitting the Notice of Birth
Staff	Public health nurse

Date	Location	For babies born in
Sept. 12th (Wed)	Kokomori	July 2018
Sept. 28th (Fri)	Minakuchi Hoken Center	

HEALTH CHECKUP FOR INFANTS & TODDLERS -- SEPTEMBER

No appointment required!

Visit your nearest Hoken Center directly.

For more details, refer to the Health Checkup Calendar.

Inquiries:
Sukoyaka Shien Ka (すこやか しえんか) at 0748-69-2168

Health Checkup	Eligible Child	Exam Date	Location	Reception Hours	Items to Bring
4 months	May 2018	9/19 (Wed)	Kaede Kaikan	1:00pm~ 1:30pm	Maternity record book(ほしてちょう), questionnaire (しつもんひょう), towel, diapers, change of clothes, formula if necessary.
		9/25 (Tue)	Shigaraki HC		
		9/27 (Thr)	Minakuchi HC		
10 months	October 2017	9/13 (Thr)	Minakuchi HC	1:00pm~ 1:30pm	Maternity record book(ほしてちょう), questionnaire (しつもんひょう), towel, diapers, change of clothes, formula if necessary.
		9/19 (Wed)	Kaede Kaikan		
		9/25 (Tue)	Shigaraki HC		
1 year and 8 months	January 2017	9/5 (Wed)	Kaede Kaikan	1:00pm~ 1:30pm	Maternity record book(ほしてちょう), questionnaire (しつもんひょう), diapers
		9/20 (Thr)	Minakuchi HC		
2 years and 6 months	February 2016	9/5 (Wed)	Kaede Kaikan	1:00pm~ 1:30pm	Maternity record book(ほしてちょう), questionnaire (しつもんひょう), survey for your child's hearing ability (ささやきこえけんしん)
		9/10 (Mon)	Minakuchi HC		
3 years and 6 months	February 2015	9/3 (Mon)	Minakuchi HC	1:00pm~ 1:30pm	Maternity record book(ほしてちょう), questionnaire (しつもんひょう), Additional questionnaire distributed at 2 years and 6 months checkup
		9/26 (Wed)	Kaede Kaikan		

English interpreter is available from 8:30 AM to 5:15 PM.
Phone: 0748-69-2114

English translation of city information is available:
<http://www.city.koka.lg.jp/en/>



Check out our video about Koka City!

