

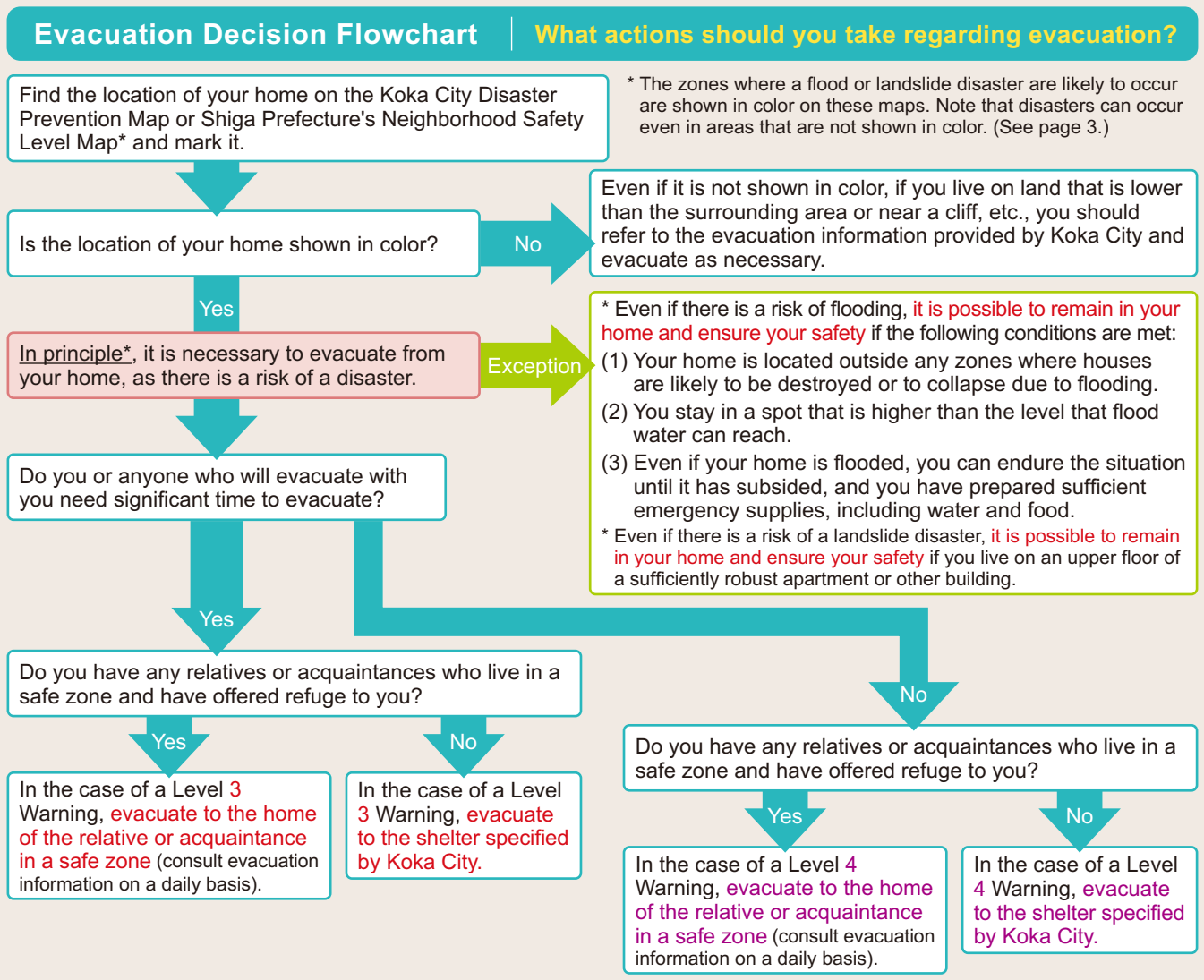


Applying the "New Normal" to disaster prevention, too -Preparation for disasters during the COVID-19 pandemic-

It is now the season when wind and flood damage and landslide disasters occur more often due to typhoons and heavy rain. As the spread of COVID-19 is a concern this year, it is necessary to consider measures to prevent infection in addition to our normal preparations. Let's check the preparedness of our family members together with our normal preparations before a disaster strikes.

Essential to check

Check the Evacuation Decision Flowchart for typhoons and heavy rain



Be sure to check

Koka City Disaster Prevention Map

The map has already been distributed to all households. If you do not have a copy of the map, you can obtain one from the Risk Management Division and from community centers. The map is also available on the Koka City Website.



Shiga Prefecture's Neighborhood Safety Level Map

The map is published on the Shiga Prefecture Hazard Maps page of the prefecture's website. You can also see the map at the Koka Office of Public Work.



Evacuation information and actions to be taken

Make sure to evacuate based on the warning level indicated by Koka City
Evacuate early and voluntarily by referring to information on river levels and rainfall provided by the Japan Meteorological Agency and other sources.

Warning level	Information to be announced	Specific actions
5	Information on the occurrence of a disaster	A disaster has occurred. Take the best actions possible to preserve life If water is already approaching the entrance or first floor, evacuate to the second floor or a higher place.
4	Evacuation advisory (evacuation instructions [emergency])	Everyone should evacuate from dangerous places In particular, those who are in landslide disaster vigilance zones should evacuate immediately.
3	Preparation for evacuation and start of evacuation of the elderly, etc.	Households with elderly members or small children should start to evacuate from dangerous places Also, pay attention to elderly persons living alone in your neighborhood.
2	Flood advisory Heavy rain advisory	Check your preparations and evacuation routes in preparation for an evacuation Discuss actions to be taken in the future with your family members and neighbors.
1	Early advisory information	Keep aware of as much advisory information as possible Keep aware of a greater variety of information.

Check items in emergency kit and household emergency supplies

Items in emergency kit and household emergency supplies

Items in emergency kits

Prepare the items that are normally needed in emergency kits for a safe evacuation and for life after evacuation.
Add **items to protect against infectious diseases** to normal preparations.

- Radio (especially useful if it can receive both AM and FM signals)**
- Flashlight (one per person, if possible)**
- Spare batteries**
- Cell phone battery charger**
- Note containing emergency contact information**
- First-aid kit**
Prescription medications, adhesive bandages, dressings, vulneraries, pain relievers, digestive medicines
- Medicine notebook**
- (For those with high blood pressure) Blood pressure notebook, blood pressure meter**
- Emergency food supplies**
Drinking water, hardtack, retort food, instant food, canned food (edible without cooking), paper cups, paper plates, knife, can opener
- Valuables**
Cash (including 10-yen coins for using public phones), bank passbooks, seals, certificates, licenses, ID cards, health insurance certificates
- Clothes including those for cold weather Underwear, socks, outerwear, raincoats, towels**
- Other**
Lighters, matches, tissue paper, wet wipes, hand warmers, kitchen wrap, helmets, work gloves, sanitary products



Essential to check



- Items to protect against infectious diseases**
Masks, hand sanitizers, clinical thermometers, button cells (for thermometers), plastic bags, slippers, etc.
Hand sanitizer



Household emergency supplies

Stock up on at least three days' worth—one weeks' worth if possible—of food and daily necessities.
Make sure to check this, especially if you intend to remain in your home.

- Food**
Rice, side dishes, confectioneries, seasonings
- Drinking water**
As a rough guide, prepare a three-liter supply for each person per day.
- Fuel**
Tabletop stove (ensure an extra supply of spare gas cylinders), portable stove for outdoor use, solid fuel
- Other**
Water for daily life (stored in a bathtub/washing machine), blankets, clothes (including those for cold weather), toiletries, sanitary products, plastic sheets, newspapers



Information sources at the time of a disaster

Koka City will issue notices regarding preparation for evacuation, the start of evacuation of the elderly, etc.; evacuation advisories; and other disaster-related information via the following methods:

- Audio broadcasting terminals
- Outdoor loudspeakers
- Aicom-Koka L-Alert broadcasts
- Koka City Website
- Ai Koka Emergency Mail



\ Protect your safety and security / Register for Ai Koka Emergency Mail

● **How to register:** To register, please see the "registration instructions" on the Koka City Website.

1 Send a blank email message

Address to send the blank message:
touroku@koka-city.jp
* You can also access it via the QR code above.

2 Receive an email containing an URL

Access the site to register using the URL provided in the email (sent from access@koka-city.jp).

3 Register the types of information you want to receive on the registration page

Select the types of information you want to receive and proceed to the next page to confirm the selected items. Select "Register" if they are correct.

4 Receive a registration completion email

Registration is complete when an email informing you of completion of registration is sent to you.

For National Health Insurance subscribers When **medical costs** are likely to be **high** (Issuance of an Eligibility Certificate for Ceiling-Amount Application)

If you submit an Eligibility Certificate for Ceiling-Amount Application to medical institutions in advance, your monthly payment at the cashier's desk of each medical institution will be no more than the amount equivalent to the copayment. If you need a certificate, please apply as described here.

* Note that a certificate may not be issued if you have not paid the full amount of the insurance tax.

● Where to apply

Health Insurance and Pension Division and Tsuchiyama, Koka Ohara, Konan Daiichi and Shigaraki community centers

● What to bring

Health insurance certificate and seal
Taxation certificate (required if you were not a resident of Koka City on January 1, 2020)

<For those who currently have a certificate>

Certificates will expire on July 31. If you still need a certificate, please apply for a new one on or after August 1.

Those individuals who are between the ages of 70 and 74 and living in an inhabitant tax-exempt household or have income comparable to the current workforce (to have a copayment of 30%), including earners of taxable income of 3,800,000 yen or more (current workforce income level II) and earners of taxable income of 1,450,000 yen or more (current workforce income level I), are also required to apply for an Eligibility Certificate for Ceiling-Amount Application.

● New insurance cards will be sent out

New insurance cards, which will be valid from August 1, will be sent out by simple registered mail in mid-July.

Contact Health Insurance and Pension (Hoken Nenkin Ka) Tel: 0748-69-2140 Fax: 0748-63-4618

Charging for plastic shopping bags will **start on July 1**

Plastic is a very useful material. On the other hand, the global challenges of marine waste and global warming are becoming more serious problems that threaten the living environment. In light of this situation, charging for plastic shopping bags will start across Japan on July 1.

For what types of bags are fees charged?

Fees will be charged for plastic bags with handles for carrying items purchased at stores. However, some environmentally friendly bags may be excluded.



What should consumers do?

Bring your own bags with you to refrain from using plastic bags when you go shopping. Similarly, let's promote environmentally friendly initiatives by considering whether other disposable plastic products are needed or not when using them and by using them wisely.

Examples

- Bring your own bottle with you
- Do not accept disposable spoons and forks offered when you buy lunch boxes and other foods
- Choose products with lower environmental impacts



Contact

Consultation Service Counter concerning charging for plastic shopping bags, Ministry of Economy, Trade and Industry
● For businesses: 0570-000930
● For consumers: 0570-080180

This year is a national census year

Covering all residents and households in Japan, the national census is the country's most important statistical survey. It is conducted once every five years to clarify the current situations of the population and households in Japan.

Contact General Affairs (Somu Ka) Tel: 0748-69-2120 Fax: 0748-63-4086

Opening hours in the month of July will be extended (to 19:00 every Tuesday) on July 7, 14, 21 and 28.

The Shimin Ka of Shiyakusho has extended its opening hours, to 19:00 every Tuesday for the issuance of family registers, residence certificates, tax certificates and other certificates, seal registration and other services.

* Note that some services are not available after normal opening hours even on these days. Please contact the Civic Affairs Division for the available services.



Information from Maina-chan

You can obtain various certificates at convenience stores with your "My Number" card. For the available types of certificates, please contact the Civic Affairs Division.

Contact Citizens' Affairs (Shimin Ka) Tel: 0748-69-2138 Fax: 0748-65-6338

Taxes to be paid this month


The due date is July 31 (Fri).

- Fixed asset tax (2nd term)
- National health insurance tax (4th term)
- Long-term care insurance premium (4th term)
- Expenses borne by users (childcare fee, kindergarten/nursery lunch fee)
- Elderly medical care insurance premium
- Public sewer charges and agricultural settlement drainage facility charges

It is convenient to use account-to-account transfers for payments.

The information below is as of May 21, and services may be terminated or postponed due to the impact of COVID-19 infection.

Consultation corner July 15 - August 21

Consultation content / Contact	Date	Time	Location
Life and work consultations (Public Assistance Counter)* You can ask for advice regarding concerns about life and work. * No application required. ● Responders: consultation support staff and employment support staff Contact: Public Assistance (Seikatsu Shien Ka) Tel: 0748-69-2158 Fax: 0748-63-4085	Monday to Friday (except national holidays)	8:30 to 17:15	Public Assistance (Seikatsu Shien Ka), City Hall
Consumer affairs consultations You can ask for advice regarding concerns about consumer affairs, such as contracts and products. ● Responders: consumer affairs counselors Contact: Consumer Life Center (Shouhi Seikatsu Center) Tel: 0748-69-2147 Consumer Hotline 188 (without area code)	Monday to Friday (except national holidays)	9:00 to 17:00	Consumer Life Center (Shouhi Seikatsu Center) City Hall 1F
Pension consultations ● Consultants: Staff of the Kusatsu Pension Office *Reservation required (first-come, first-served) Contact / Application: Kusatsu Pension Office Tel: 077-567-1311 (for making reservations only) Fax: 077-562-9638 (for making reservations only)	September 10 (Thu.) November 12 (Thu.) * Organized every two months	10:00 to 15:00	Minakuchi Shakai Fukushi Center 2F, Middle meeting room
Childrearing and learning consultations* You can ask for advice regarding development, educational, mental and other issues. * Reservation by phone or fax required. ● Targets: Children roughly 4 years old or older, elementary school, junior high school and high school students, and youths (up to around 25 years old) * For consultations regarding children under 4 years old or so, contact the Health Support Division (Tel: 0748-69-2169). Contact / Application: Public Assistance (Seikatsu Shien Ka) Tel: 0748-69-2179 Fax: 0748-69-2298 (reception hours: 9:00 to 17:00)			Kindergartens/ Nurseries, Schools, Koka Shiyakusho, etc.
Youth concerns consultations* You can ask for advice on school absenteeism, bullying, delinquency, relationships with friends, employment, admission to schools, etc. * Monday to Friday (excluding national holidays and Year-End/New Year holidays), 9:00 to 16:00. You can ask for advice by phone or email as well.	Contact : Shounen Center (Minakuchi Chuo Kouminkan Bekkan 2F) Tel: 0748-62-6010 Fax: 0748-63-3977 Email: k-syonen@city.koka.lg.jp		

Edited and issued by:

Koka Shiyakusho

6053 Minakuchi, Minakuchi-cho, Koka, Shiga Prefecture 528-8502
 ☎0748-65-0650 FAX 0748-63-4086
 Business hours: 8:30 to 17:15
 (excluding days with extended opening hours)

The information in this newsletter can also be found on the city's website and Facebook page.

- Koka City Website:
<http://www.city.koka.lg.jp/>
- Koka City Facebook:
<http://www.facebook.com/city.koka>

Koka City Website



Koka City Facebook

