



Information on Applying to Receive COVID-19 Vaccine in the Event of a Surplus

In the event of there being a surplus of vaccine available due to such factors as cancellation of appointments for individual vaccinations (at medical institutions) or group vaccinations (at other designated vaccination sites), information on how to receive these vaccinations will be distributed by telephone to those who request such information.

Due to the nature of the vaccination system and the vaccines themselves, certain criteria have been set, and monthly registration is required in order to receive this information.



**September
Registration Period**

September 2 (Thu) noon to September 9 (Thu) noon

*We will issue separate notifications regarding the registration periods for October and later.

Reservation Method Koka City Surplus Vaccine Efficient Utilization System Registration Form

(N.B.) Registrations can only be accepted by means of the specialized form. You cannot register through the COVID-19 Vaccination Call Center, COVID-19 Response Office Consultation Center, or the various Community Civic (Chiiki Shimin) Centers.

Registration Eligibility Those who meet both of the following conditions can register:

- (1) Must hold either a vaccination coupon distributed by Koka City or a certificate of eligibility for out-of-district vaccination
- (2) Must not have already received their first dose of the vaccine

Important Information •Registration must be renewed every month.

- Those who have already received their first dose are ineligible for registration.
- If you are contacted three times in a single calendar month but we are unable to reach you or your schedule doesn't work out, you will not be contacted until later.
- Only the actual registered individual will be able to receive the vaccination. You cannot pass the vaccination right on to friends or relatives.

Notification Time In principle, approximately 3:30 pm or 8:00 pm (planned)

*Depending on circumstances such as the presence of surplus vaccine at individual vaccination medical institutions or distribution status at group vaccination sites, you may be contacted at a time other than the above.

- If you cannot be reached the first time you are called, you will not be contacted a second time.
- If you cannot come to the vaccination site within 15 minutes of receiving the call, the next person will be contacted.
- In order to be vaccinated, you will need your vaccination coupon, pre-examination ticket, and some form of identification document.
- Persons aged 16 to 18 must be accompanied by a parent/guardian.
- Persons aged 12 to 15 are not allowed to register.

Inquiries COVID-19 Response Office TEL.0748-69-2154 FAX.0748-69-2255

Cancer Screenings by Koka City

Stomach Cancer Screenings

It's said that H. pylori is a risk factor

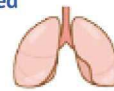
- Eligible Persons** Those aged 40 or older
- How Often Should You Be Checked** Once per year
- Screening Method** X-ray examination of stomach
- Amount Borne by the Individual** ¥900



Lung Cancer Screenings

More and more common among those over 45

- Eligible Persons** Those aged 40 or older
- How Often Should You Be Checked** Once per year
- Screening Method** X-ray examination of chest
- Amount Borne by the Individual** ¥200
- Sputum examination (only if applicable)** ¥500



Bowel Cancer Screenings

More and more common among those over 40

- Eligible Persons** Those aged 40 or older
- How Often Should You Be Checked** Once per year
- Screening Method** Test for blood in stool
- Amount Borne by the Individual** ¥500



Breast Cancer Screenings

Said to affect as many as 1 in 11 women

- Eligible Persons** Women aged 40 or older
- How Often Should You Be Checked** Twice per year
- Screening Method** Mammogram (x-ray examination on breasts)
- Amount Borne by the Individual** ¥1,500



Cervical Cancer Screening

More and more common among those in their 20s and 30s

- Eligible Persons** Women aged 20 or older
- How Often Should You Be Checked** Twice per year
- Screening Method** Cytology of the cervix
- Amount Borne by the Individual** Groups ¥1,000
Medical institution ¥1,700

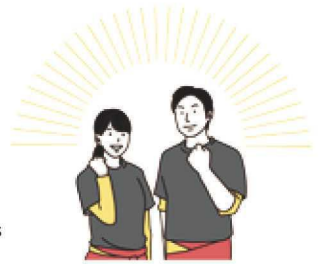


Regional Economic Support Coupons (2021) Can Be Used from September 1

Toward the end goal of recovery of the regional economy following the impact of the COVID-19 pandemic, we will start using coupons to support the local economy for the purpose of stimulating consumption.



List of Accepting Shops



Use Period (Planned)

September 1 to January 31, 2022

- Eligible Persons** All city residents *One (1) booklet per household plus 1 booklet for each household member (e.g.: five booklets for a family of four)
- Amount** ¥2,500 per booklet (¥500 × 5 coupons)
- Can Be Used At** Shops accepting coupons only For details, please see the page accessed from the QR code.
- How to Use** One ¥500 coupon can be used for each ¥1,000 of a purchase.
- Important Information**
 - *Coupons cannot be used after the use period has ended.
 - *Coupons cannot be used for some products and services.
 - *The coupons are being sent to all households in the city, but if you are not at home or cannot receive them for some other reason, please contact City Hall.

For details, please see the Koka City website.

Inquiries

New Industry Promotion Commerce, Industry, and Labor Administration (Shoko Rosei Ka)
TEL.0748-69-2187 FAX.0748-63-4087

Now Accepting Applications for the Special Benefit for Supporting the Lifestyles of Child-rearing Households (Excluding Those for Single-parent Households)

We will be providing monetary aid to support child-rearing families affected by the COVID-19 pandemic.

- Eligible Persons** In order to be eligible for the benefits, you need to meet both the following criteria (1) and (2).
 - (1) Must be a household raising at least one child who had not reached the age of 18 (20 in the case of child support special allowance) as of March 31, 2021 *Those with newly born children born before February 28, 2022 are also eligible.
 - (2) Must either be exempt from residence tax (per capita) for fiscal 2021 or have experienced a sudden change in income since January 1, 2021 due to the impact of the novel coronavirus pandemic and therefore have an income level equivalent to one meriting an exemption from residence tax.

Be Careful!

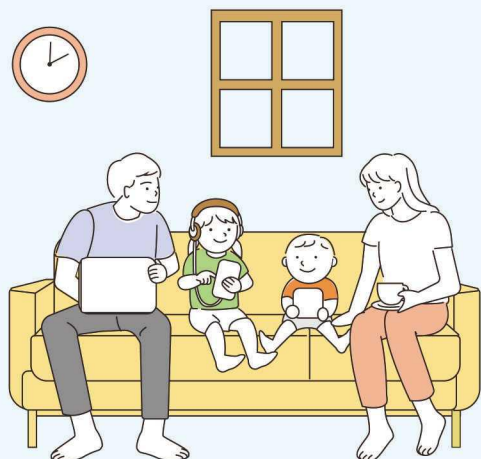
- *Those exempt from residence tax in fiscal 2021 and eligible for the April 2021 child support allowance or child support special allowance have already been paid on July 29.
- *Those receiving the Special Benefit for Supporting the Lifestyles of Child-rearing Households (for single-parent households) are ineligible.

- Benefit Amount** ¥50,000 per eligible child
- Application Procedure** If you plan on making an application, please bring the following documents with you to the applications window and complete the procedure.
 - *Applicant's identification document (driver's license, Individual Number Card, etc.)
 - *Document for confirming the receiving account (passbook or cashcard)
 - *Document for confirming income in any particular calendar month since January 2021 (pay slip, book of business income, pension transfer notice, etc.)

*One each is needed for both the applicant and his/her spouse.

- Application Period** Until February 28, 2022 (Mon)
- Contact** Child Rearing Policy (Kosodate Seisaku Ka), Community Civic (Chiiki Shimin) Centers in Tsuchiyama, Koka, Konan and Shigaraki

*For the specific amount that would constitute "an income level equivalent to one meriting an exemption from residence tax," please see the Koka City website or contact us.



Inquiries

Child Rearing Policy, Child Rearing Policy (Kosodate Seisaku Ka) TEL.0748-69-2176 FAX.0748-69-2298
MHLW Call Center TEL.0120-811-166 (Mon to Fri 9:00 am to 6:00 pm)

Information on How to Apply for Admission to Nursery Schools, Certified Childcare Centers (Full-time, No. 2 and No. 3 Certification), Small-scale Childcare Centers, Home-based Childcare Centers, and Public Kindergartens in the School Year Beginning April 2022



Applications are now being accepted for admissions in the 2022 school year.
Please check the websites of the individual nursery schools and kindergartens for details like admission capacity.

Applications for Admission to Nursery Schools, Certified Childcare Centers (Full-time, No. 2 and No. 3 Certification), Small-scale Childcare Centers, and Home-based Childcare Centers

Date of Documents Going Out September 1 (Wed)

*The necessary documents are available with the admission information at various nursery schools and kindergartens, Community Civic (Chiiki Shimin) Centers in Tsuchiyama, Koka, Konan and Shigaraki, various Parenting Support (Ko Sodate Shien) Centers, and Nursery School and Kindergarten (Hoiku Yochien Ka).

Reception Period October 1 (Fri) to 13 (Wed) (except weekends)

Where to Apply •Already enrolled: Currently enrolled nursery school or equivalent (or first choice nursery school or equivalent if not already enrolled there)

•New entries: First choice nursery school or equivalent (applies to those not yet enrolled anywhere or who are on a waiting list this year)

*Only those who are unable to apply for an unavoidable reason, or who need interpreting services should make an application to Community Civic (Chiiki Shimin) Centers or Nursery School and Kindergarten (Hoiku Yochien Ka).

*Applications are also accepted by mail. Please send your application by registered mail. It must arrive no later than October 13.

Reception Hours Individual nursery schools, etc.: 8:30 am to 6:00 pm

Community Civic (Chiiki Shimin) Centers and Nursery School and Kindergarten (Hoiku Yochien Ka): 8:30 am to 5:15 pm

*If you are unable to apply during the above hours, you can submit an application to Nursery School and Kindergarten (Hoiku Yochien Ka) during after-closing hours only on the following days.

•October 5 (Tue) and 12 (Tue), 5:15 pm to 7:00 pm

Important Information *Applications are also required for children who are currently enrolled in kindergarten for the current school year (unofficially).

*For those who applied this year and are on a waiting list, you will need to apply again for the 2022 school year.

*Those whose maternity/paternity leave is ending mid-year and want to enroll their child in some month other than April also need to apply now. Applications are also being accepted from expecting parents of currently unborn children.

*Kokonossu En (an integrated certified childcare center for Minakuchi Higashi and Iwagami) accepts applications for Minakuchi Higashi Nursery School and Iwagami Nursery School.

Applications for Admission to Public Kindergartens

Bantani, Tsuchiyama, Ohara, Aburahi, and Shigaraki Kindergartens are accepting new enrollments.

Reception Period September 6 (Mon) to 8 (Wed)

Where to Apply Preferred kindergarten

Reception Hours 8:30 am to 5:15 pm

*The required documents for not only kindergartens but also various nursery schools, etc. are available at the same places.

*If you are unable to apply during the application period, you can submit an application to Nursery School and Kindergarten (Hoiku Yochien Ka) on September 9 (Thu) or 10 (Fri).

•September 9 (Thu) and 10 (Fri), 8:30 am to 5:15 pm

Important Information *Application forms for children already enrolled in kindergarten this year will be distributed through each kindergarten.

*Enrollment will be chosen by lottery system if there are many applicants. If the lottery system is to be employed, this will be posted on the Koka City website on September 13 (Mon) or later. Affected persons will be notified of the details separately.

*For information on private preschools, please contact each preschool.

Note

You cannot apply for both public kindergarten and nursery school (etc.).

Inquiries

Management, Nursery School and Kindergarten (Hoiku Yochien Ka)
TEL.0748-69-2180 FAX.0748-69-2298



Start of Applications for After-school Children's Clubs in the 2022 School Year

Koka City has established "After-school Children's Clubs" to promote the healthy growth and development of children whose parents are unable to care for them at home during the day due to reasons such as work.

Those wishing to enroll their children in the school year starting in April 2022 are requested to apply during the period indicated below.

*For details, please contact the specific club.

*Children who meet the criteria and have a high level of need for after-school care will be given priority.



Eligible Persons	1st through 6th grade
Usage Time	Weekdays: After school, up to 6:30 pm Saturdays: 8:00 am to 6:30 pm (available when there are five or more applicants) Long vacations: 8:00 am to 6:30 pm
Usage Fee	¥10,000/month for weekdays (Saturday and holiday usage will cost extra.)
Application Period	October 1 (Fri) to 13 (Wed)

Category	Name of Club	School District	Managed by	Where to Apply
Publicly funded, privately operated	Minakuchi After-school Children's Club	Minakuchi	Wakuwaku Kids (NPO) 2-18 Yasaka, Minakuchi-cho TEL.0748-63-4655	The After-school Club of your choice Weekdays: 3:00 pm to 6:30 pm Wakuwaku Kids (NPO) TEL.0748-63-4655 Weekdays: 9:30 am to 5:30 pm
	Ayano After-school Children's Club	Ayano		
	Kibukawa After-school Children's Club	Kibukawa		
	Bantani After-school Children's Club	Bantani		
	Bantani-higashi After-school Children's Club	Bantani-higashi		
	Kashiwagi After-school Children's Club	Kashiwagi		
	Tsuchiyama Kashikiya After-school Children's Club	Tsuchiyama		
	Ono After-school Children's Club	Ono		
	Aburahi After-school Children's Club	Aburahi	Aburahi After-school Children's Club Parents' Association	TEL0748-88-2384
	Ohara After-school Children's Club	Ohara	Labor Union Center Business Group (Corporate Cooperative) Koka Business Center TEL.080-6160-1286	TEL0748-88-2368
	Sayama After-school Children's Club	Sayama		TEL0748-70-2249
	Konan Somakko After-school Children's Club	Konan-daiichi		TEL0748-70-2329
	Konan Wakuwaku After-school Children's Club	Kibogaoka		TEL0748-86-4024
	Konan Nakayoshi After-school Children's Club	Konan-chubu, Konani-daisan		TEL0748-86-1577
	Kohara Tsubasa After-school Children's Club	Kohara		TEL0748-82-4511
Kumoi Kumokko After-school Children's Club	Kumoi	TEL0748-83-0311		
Shigaraki After-school Children's Club	Shigaraki	TEL0748-82-2010		
Privately funded, privately operated	After-school Sanma Club	Various school districts, etc. in the Minakuchi area	Sanma Club (NPO) TEL.0748-76-3414	TEL0748-76-3414
	Mori no Nakayoshi After-school Children's Club	Konan-daini	Labor Union Center Business Group (Corporate Cooperative) Koka Business Center TEL.080-6160-1286	TEL0748-70-2664

Inquiries

Child Rearing Policy, Child Rearing Policy (Kosodate Seisaku Ka)
TEL.0748-69-2176 FAX.0748-69-2298

September 10 to 16 Is Suicide Prevention Week: Let's Protect Human Lives That Are So Valuable

- Train yourself to see the warning signs, both physical and emotional

These are the three big ones:

1. Can't sleep
2. Can't eat
3. Tires easily

Are you or someone you love showing these three warning signs? If so, this might be one of the warning signals of depression. "Can't sleep" in particular should not be taken lightly if it continues for more than two weeks. Please seek medical attention from a specialist.

Depression is a disease that can affect anyone.

Some particularly severe cases can even lead to suicide. The disease is caused by an imbalance of hormones in the brain, and has nothing to do with how a person "feels" or having a "weak mind." Depression is also a treatable illness. If you find yourself thinking "Maybe this is depression..." please don't hesitate to contact a specialist!



Inquiries Health Support (Sukoyaka Shien Ka) TEL.0748-69-2168 FAX.0748-63-4085

Support for Applications for Individual Number Cards

Application support for the Individual Number Card is available at the counter as follows.

A photo of your face is taken on a tablet. The whole process takes about 10 minutes per person. (The process is free of charge.)



Place Citizens' Affairs (Shimin Ka), Community Civic (Chiiki Shimin) Centers in Tsuchiyama, Koka, Konan, and Shigaraki

Required document(s) (1) Card application form (either the lower part of the number notification card or the application form with the QR code sent out in February or March 2021)

(2) If you do not have the above, please bring a personal identification document (any one of the following: driver's license, passport, residence card, disability certificate or other such ID with a photo; if you do not have any of these, you can use any two of the following: health insurance card, nursing care insurance card, pension book, student ID, Marufuku, etc.) and a new application form will be issued on the spot.

Inquiries Citizens' Affairs (Shimin Ka) TEL.0748-69-2138 FAX.0748-65-6338

Your Rent Can Be Subsidized for Up to ¥20,000

Those living in private rental housing who meet the criteria for moving into municipal housing are eligible for subsidized rent.

Application Period September 27 (Mon) to October 8 (Fri)

Planned Period of Support December 2021 to November 2023

How to Apply Application information and application forms are distributed at Public Housing Construction (Jutaku Kenchiku Ka). You can also access them on the Koka City website.

Availability Subsidies available for 20 applicants (chosen by lottery system if there are many applicants)

Inquiries Public Housing, Public Housing Construction (Jutaku Kenchiku Ka) TEL.0748-69-2212 FAX.0748-63-4601



September After-hours Counter (every Tuesday until 7:00 pm) : September 7, 14, 21, 28

Every Tuesday the Koka City Hall Citizens' Affairs (Shimin Ka) is open until 7:00 pm, so you can complete administrative procedures such as having certificates issued (family register, resident register, tax certificate, etc.) or registering your personal seal.

*There are some procedures that cannot be done at the After-hours Counter. Please call or fax the numbers listed below to find out which procedures are handled at this counter.

Notice from Maina-chan

You can use your Individual Number Card to get a copy of various certificates at convenience stores. (Check the list below for the applicable certificates.)



Inquiries Citizens' Affairs (Shimin Ka) TEL.0748-69-2138 FAX.0748-65-6338

September Tax Payments

The due date for tax payments this month is September 30 (Thu).

Please use the convenient direct debit system for your tax payments.

- National Health Insurance tax (4th installment)
- User fees (Nursery school fees, Kindergarten and Nursery school lunch fees)
- Nursing-care insurance premium (4th installment)
- Medical Insurance premiums for older senior citizens
- Public sewerage fee/Rural community sewerage fee

Consultation content/Contact

Date

Time

Location

Life and Work Consultations (Public Assistance Counter)*

Advice is available for concerns about daily life and work.

*No need to apply Responders: Consultation support staff, and employment support staff

Contact Public Assistance, Public Assistance (Seikatsu Shien Ka)

TEL.0748-69-2158 / FAX.0748-63-4085

Every week, from Monday to Friday (except public holidays)

8:30 am to 5:15 pm

Public Assistance (Seikatsu Shien Ka), Koka City Hall Public Assistance Counter (Seikatsu Shien Madoguchi)

Consumer Affairs Consultations

Advice is available for concerns about consumer affairs, such as products, purchase agreements and other contracts.

You may be directed to the Shiga Prefecture Consumer Center.

Responders: Consumer affairs counsellors

Contact Consumer Life Center (Shouhi Seikatsu Center)

TEL.0748-69-2147 (Consumer Hotline)188 (no area code)

Every week, from Monday to Friday (except public holidays)

9:00 am to 5:00 pm

1F, Koka City Hall Consumer Life Center (Shouhi Seikatsu Center)

Pension Consultations

Consultations: Kusatsu Pension Office staff

*By appointment only, first-come-first-served basis

Contact Appointments Kusatsu Pension Office

TEL.077-567-1311 (for appointments) / FAX.077-562-9638 (for appointments)

November 11 (Thu)
January 13, 2022 (Thu)
*Held every second month

10:00 am to 3:00 pm

Minakuchi Social Welfare (Shakai Fukushi) Center
2F Middle Meeting Room

School-age Children Consultations

This consultation counter is for school-age children (elementary to high school) and their parents/guardians and other family members. Why don't we think about school, life, and parenting together?

Responders: Counsellors for school-age children

Contact Child Rearing Policy, Child Rearing Policy (Kosodate Seisaku Ka)

TEL.0748-69-2176 / FAX.0748-69-2298

Every week, on Monday, Thursday, and Friday (except public holidays)

8:30 am to 5:15 pm

2F, Koka City Hall Child Rearing Policy (Kosodate Seisaku Ka)

Parenting and Study Consultations*

We are ready to listen and offer advice on matters about your child's development and emotional/mental concerns.

*Please make an appointment by phone or fax.

Eligible: Generally children aged 4 years or older, elementary and middle & senior high school students, adolescents and young adults (up to around 25 years old)

*For consultations regarding children aged 4 or young, please contact the Health Support (Sukoyaka Shien Ka) on 0748-69-2169.

Contact Appointments Development Support (Hattatsu Shien Ka)

TEL.0748-69-2178 / FAX.0748-69-2298 (Hours: 9:00 am to 5:00 pm)

Kindergartens/nurseries and schools, Koka City Hall, etc.

Youth Concerns Consultations*

We are ready to listen and offer advice on matters concerning young people, including school absenteeism, bullying, misbehaving, delinquency, friendships, and pursuing further education or finding work.

*From Monday to Friday, 9:00 am to 4:00 pm (except public holidays and end-of-year holidays). Consultations can also be made by phone and email.

Contact Youth (Shonen) Center (2F Annex, Minakuchi Central Community Center (2F Minakuchi Chuo Kominkan Bekkan))

TEL.0748-62-6010

FAX.0748-63-3977

Email: k-syonen@city.koka.lg.jp



Editor & Publisher

Koka City Hall

6053 Minakuchi, Minakuchi-cho, Koka City 528-8502

TEL.0748-65-0650 FAX.0748-63-4086

Hours: 8:30 am to 5:15 pm

(except for the After-hours Counter on Tuesday)

Please check the Koka City website and Facebook page for information on the newsletter.

Koka City website

<http://www.city.koka.lg.jp/>

Koka City Facebook page

<http://www.facebook.com/city.koka>

Koka City website



Koka City Facebook page

