

Are “You” Prepared for Disasters?

What citizens can do now to prepare for disasters

In recent years, natural disasters such as typhoons, localized torrential rains, and earthquakes have been occurring in many parts of Japan every year, and there is no telling when they may occur in Koka City as well. That is why we will now tell you what you can do to prepare.



Come up with your own disaster preparedness plan!

What kind of hazards could be expected in our community in the event of a disaster?
Take a look at some examples!

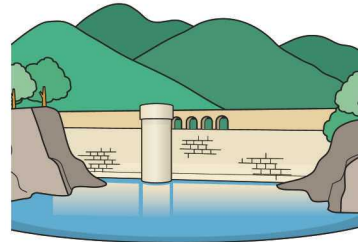
Underpasses: Be careful of flooding!



If you drive into a flooded area without realizing it, your engine will stop and you will be stranded. Also, when the water depth reaches 50 cm, passengers cannot open the doors and will be trapped inside the car. Be sure to avoid underpasses during heavy rain!

Reservoirs: Fears of collapse due to heavy rain and earthquakes

Natural disasters may cause levees to fracture, landslide, or collapse. To avoid extensive damage, it is important to know the location of reservoirs!



▲Map of priority reservoirs for disaster preparedness



How about your area?

Look at the Disaster Preparedness Map distributed to each household to see what hazards can be expected in your area in the event of a disaster!

Also, discuss and create “My Timeline” with your family and community members to determine **when, where, and how** to evacuate!

There is a video that explains it in detail, so check it out!
My Timeline in Shiga
(Shiga Prefecture’s official YouTube channel)



Do you know what emergency food tastes like?

Emergency food is essential in times of disaster.

In recent years, many people have purchased products that can be useful when lifelines have stopped, such as products that can be cooked with water or eaten as-is, but how many actually know what these products taste like?

Eating familiar foods on a regular basis is also expected to **reduce stress when staying in disaster shelters and other places.**

This is a good reason why everyone should think again about how we treat the emergency food that could one day keep us alive!



High-calorie sweet foods are perfect for emergencies!

Sugar is not only a source of energy for the body, but also has a relaxing effect on the mind! If you want to eat salty food, crackers and snacks are the perfect choice!



A warm, comforting taste

Choose emergency foods such as cup noodles or instant curry that reminds you of the food you usually eat!

*Try it and see how it tastes!



That hobby of yours Could come in really useful in the event of a disaster!

Many people may have started camping during the “outdoor recreation” boom during the pandemic.

Camping equipment could come in really useful in the event of a disaster!

Rather than store it in a shed after use, make use of it on a regular basis and have it ready for immediate use!

And if you don't have any equipment, it is becoming available at more and more places due to the recent boom, so why not consider buying some?



Enameled and wooden tableware



Use as unbreakable tableware for everyday dining

LED lantern



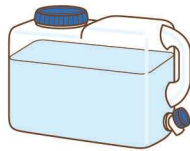
Use for indirect lighting and other interior design features

Sleeping bag



Put in a commercial cushion cover and use in a living room

Water tank



Put in the refrigerator and use as a water server

Portable power supply and solar panel



- For places that are normally out of reach of electrical outlets
- Charge batteries at night when electricity costs are low to save energy

This is essential for using a cell phone as a means of communication!



Simple with a smartphone! Gather information instantly!



City's Official LINE

Disaster preparedness information is also available along with events and announcements from the city. Don't forget to setup your inbox!



AI-Koka emergency mail

In addition to weather information, earthquake, landslide, and evacuation information will be distributed. Multilingual distribution in English, Portuguese, and other languages is also provided!



Japan Meteorological Agency website

Weather, typhoon and other information can be tracked in real time.



Learn and help each other in the community! Disaster preparedness techniques!

To protect one's own life, it is of course important to be individually prepared, but in the event of a disaster, it is also important to **help each other in the community**. Let's share information locally and aim for a **disaster-resistant community**!

What can I do?

Conduct evacuation drills to identify evacuation routes and locations. Attend “**visiting lectures**” held by the city in the community to enhance knowledge, etc.

People from Iwamuro Ward, Koka Town, who attended the lecture ▶



It reminded us that individual preparedness is necessary to enhance the disaster preparedness of the community!

Koka City households raising children in FY2023

Applications for special benefits are now being accepted

If you are eligible for benefits, please apply before the deadline.

Eligible persons Parents raising a child between the ages of 0 and 18 (born between April 2, 2005 and March 31, 2024)

*Only children who have a residence in the city as of April 30, 2023 are eligible. *There is no income limit.

Amount ¥10,000 per eligible child

Please note! If you need to apply, an application form will be mailed to your eligible child.

For those who do not need to apply (households receiving child allowance (excluding public employees)), the money is transferred on June 30.

Application Procedure Please submit the application and claim form with the attached documents. Applications can also be made online.

*Please check the Koka City website or contact us for details.

Application Deadline Until March 31, 2024

Contact Child Rearing Policy (Kosodate Seisaku Ka), Community Civic (Chiiki Shimin) Centers in Tsuchiyama, Koka, Konan and Shigaraki

Apply as early as possible



Koka City website ▶

Inquiries

Child Rearing Policy, Child Rearing Policy (Kosodate Seisaku Ka)
TEL.0748-69-2176 / FAX.0748-69-2298

Please Submit Your Current Status Update Notification for Receipt of Child Support Allowance or Income Status Report for Child Support Special Allowance

Recipients of a child support allowance or child support special allowance (including those whose payments are suspended due to income restrictions) are required to submit a report of their current status and income situation each year.

(1) Child support allowance status update notification

This notification confirms eligibility, income status, and child custody status in the previous year. If your status update notification is not submitted, you cannot receive the allowance from November onward.

Please make sure to submit the notification.

*The recipient is required to come in person into the office for an interview.

Submission Period August 1 (Tue) to August 31 (Thu)

Contact Child Rearing Policy (Kosodate Seisaku Ka), Community Civic (Chiiki Shimin) Centers in Tsuchiyama, Koka, Konan and Shigaraki (both (1) and (2))

*Please contact the following for details.

Inquiries

Child Rearing Policy, Child Rearing Policy (Kosodate Seisaku Ka)
TEL.0748-69-2176 / FAX.0748-69-2298

(2) Income status report for child support special allowance

This notification confirms income status and child custody status in the previous year. If your status update notification is not submitted, you cannot receive the allowance from August onward. Please make sure to submit the notification.

Submission Period August 10 (Thu) to September 11 (Mon)

The deadline for applying for My Number Points is the end of September!

By linking a cashless payment service to an Individual Number Card issued on or before March 1, 2023, you can receive a maximum of ¥20,000 worth of My Number Points.

We are expecting a flood of applications just before the application deadline, so please apply as soon as possible.

Also, if you have not yet received your My Number Card, please do so as soon as possible.

Apply as early as possible



[Click here to see how to apply for My Number Points. ▶](#)

Notice of Group Health Checkups (Medical Checkups)





Starting in September



Group health checkups (medical checkups) for the second half of the 2023 fiscal year will be performed as outlined below.

If you have not yet been examined, please take this opportunity to make an appointment. Please check the health checkup (medical checkup) calendar for details.

Reservation Method Please apply by phone or online. *No appointment is needed for bowel cancer screening.

	Cancer Screenings 40 years old or older (30 years old or older for cervical cancer)	Basic Medical Checkup 16 to 39 years old	Special Medical Checkup 40 to 64 years old
Phone	<p>Reservation Period August 14 (Mon) to 17 (Thu)</p> <p>Cancer Screening Number 0120-037-656</p> <p>Reception Hours 9:00 am to 6:00 pm</p> <p>*If the line is busy, please wait for a while and call back. (The line will be very busy on the first day)</p>		<p>Reservation Period August 14 (Mon) to September 31 (Thu) *Except Saturdays and Sundays TEL.0748-69-2141 (National Health Insurance and Pension, Health Insurance and Pension (Hoken Nenkin Ka))</p> <p>Reception Hours 8:30 am to 5:15 pm</p>
Online Available 24 hours/day	<p>Reservation Period August 14 (Mon) to September 4 (Mon)</p> <p>Men ▶  Women ▶ </p>		<p>Reservation Period From August 14 (Mon) to September 4 (Mon) (24-hour service)</p> <p></p>

Health Checkups (Medical Checkups) Schedule

● is the date it will be conducted

If you wish to have a cancer screening and a specific health checkup on the same day, please make an appointment for both at the same reception time.

Date	Venue	Reception Hours				
		Stomach/Lung Cancer	Bowel Cancer	Breast/Cervical Cancer	Basic Medical Checkup	Special Medical Checkup
		Women Men				
September 5 (Tue)	Shigaraki Development Center	●	●	●	●	●
September 8 (Fri)	Tsuchiyama Development Center	●	●	●		●
September 12 (Tue)	Koka Health Checkup (Hoken) Center	●	●	●	●	●
September 14 (Thu)	Maroom				● 9:30 am to 10:45 am	
September 28 (Thu)	New Minakuchi Gymnasium	●	●	●		
September 29 (Fri)	Gymnasium	●	●	●		●
September 30 (Sat)	Koka City Hall (Annex)	●	●	●		●
October 10 (Tue)	Konan Community Center	●	●	●		●
October 11 (Wed)	(Kominkan) (Shinobi-no-Sato Plala)	●	●	●		●
January 18 (Thu)	Maroom				● 9:30 am to 10:45 am	

Inquiries
Cancer Screenings and Basic Medical Checkups
 Health Promotion, Health Support (Sukoyaka Shien Ka)
 TEL.0748-69-2168
 FAX.0748-63-4085

Special Medical Checkup
 National Health Insurance and Pension, Health Insurance and Pension (Hoken Nenkin Ka)
 TEL.0748-69-2141 / FAX.0748-63-4618

Application for Private Preschools in the School Year Beginning in April 2024



For details, please contact the specific preschool.

*Detailed information on the enrollment process for public preschools will be published in the September issue.

	Enrollment capacity	Get an application at	Enrollment information seminar	Application period	Inquiries
It will become a certified childcare center from 2024.	Certified Childcare Center Konan Kindergarten (Part-time)	Under 3-year-olds (2-year-olds): No applications accepted 3-year-olds: 20 or so children 4-year-olds: A few children 5-year-olds: A few children	From August 1 (Tue) *An information seminar will be held on Saturday, September 9 at 10:00 am (admission: 9:30 am) for the full-time nursery schools (No. 2 and No. 3 Certification). *No appointment required	From 3:30 pm, August 25 (Fri) (Admission: 3:00 pm) After the enrollment information seminar; first-come-first-served basis	Morishima Gakuen Certified Childcare Center Konan Kindergarten 604 Noda, Konan-cho TEL.0748-86-8088
	Kibukawa Kodomoen (Part-time)	Under 3-year-olds (2-year-olds): No applications accepted 3-year-olds: 20 or so children 4-year-olds: A few children 5-year-olds: A few children	From August 1 (Tue) *A full-time nursery information seminar will also be held. *No appointment required	From 4:00 pm, September 1 (Fri) (Admission: 3:45 pm) After the enrollment information seminar; first-come-first-served basis	Morishima Gakuen Kibukawa Kodomoen 2100 Sandaiji, Minakuchi-cho TEL.0748-62-8188
To be newly established in 2024 (Nojiri, Konan-cho)	Kokonossu En (Part-time)	Under 3-year-olds (2-year-olds): No applications accepted 3-year-olds: 20 or so children 4-year-olds: A few children 5-year-olds: A few children	From 9:00 am, August 7 (Mon) *No appointment required	From 1:30 to 2:30 pm, August 25 (Fri) (Admission: 1:00 pm) After enrollment information seminar *If the number of applicants exceeds the limit, a lottery will be held at a later date.	Social Welfare Corporation Kikeikai Kokonossu En 45-1 Akiba, Minakuchi-cho TEL.0748-63-5670
	Bantani Kujira Kodomoen (Part-time)	Under 3-year-olds (2-year-olds): No applications accepted 3-year-olds: 15 children 4-year-olds: No applications accepted 5-year-olds: No applications accepted	From 9:00 am, August 1 (Tue) *No appointment required	From 10:30 am, August 26 (Sat) (Admission: 10:15 am) After the enrollment information seminar; first-come-first-served basis	Social Welfare Corporation Kujira Bantani Kujira Kodomoen 1015 Bannakayama, Minakuchi-cho TEL.0748-65-2185
	Leimond Koka Childcare Center (Part-time)	Under 3-year-olds (2-year-olds): No applications accepted 3-year-olds: 5 children 4-year-olds: 5 children 5-year-olds: 5 children	From August 7 (Mon) *By appointment only (via Lemonkai website)	August 26 (Sat) Shinobi-no-Sato Plala Main Conference Room (1) From 1:00 pm (2) From 3:00 pm (3) From 5:00 pm From August 7 (Mon)	From August 7 (Mon) Social Welfare Corporation Lemonkai Osaka head office Hoshiai Bldg 3F, 2-5-16 Tenjinbashi, Kita Ward, Osaka TEL.06-6926-4719

Detailed information on the enrollment process for private and public nursery schools will be published in the September issue.

Inquiries

Management, Nursery School and Kindergarten (Hoiku Yochien Ka)
TEL.0748-69-2180 / FAX.0748-69-2298

Koka City website ▶



Group vaccinations for “2023 Spring Vaccinations for COVID-19” will end in August.

Group vaccinations under the “2023 Spring Vaccinations for COVID-19”, which target the elderly, people with underlying medical conditions, and medical personnel, will end in August. In addition, the group vaccination program will be reduced in August, so if you wish to be vaccinated, please make an appointment as soon as possible.

Details regarding the “2023 Autumn Vaccinations for COVID-19” to be administered from September will be announced as soon as they are finalized.

*Vaccination is optional and is not mandatory.

*Please be sure to bring the pre-examination ticket with vaccination coupon and applicant's identification documents.

Inquiries

COVID-19 Response Office Consultation Center
TEL.0748-69-2154 (Mon. to Fri. 9:00 to 5:00 pm)

Scan for August vaccination schedule ▶



Summer Event No. 2!! Let's enjoy summer together!!

Summer events in Koka City continue in August! Why don't we all go on a summer vacation together?

●The 22nd Go-Zare GO-SHU!

Dates 10:30 am to 4:00 pm, August 6 (Sun)

Place Kafuka Yume no Mori Park



Inquiries

Koka City Tourism and Town Planning Association
TEL.0748-60-2690

●Somagawa Summer Festival

Dates August 16 (Wed)

Ceremony: 5:30 to 8:00 pm

Fireworks: 8:10 to 8:40 pm

Place Somagawa riverside



Inquiries

Somagawa Summer Festival Executive Committee
TEL.0748-70-2059

Obon Holiday Urine Collection

Collection of urine during the Obon closure will be as follows. If you would like to request an extra collection before Obon, please contact the collection company by the application deadline below.

Contractor	Temporary application deadline date until Obon	Obon closure	Collection region	
Minakuchi Technos (TEL.0748-62-1959)	August 4 (Fri)	August 11 (Fri/holiday) to August 15 (Tue)	Minakuchi-cho	All of Minakuchi-cho
			Shigaraki-cho	Nagano Kita Shinmachi, Kitade-cho, Toiya-cho, Tojo-cho, Hiroshiba-cho, Higashi Nihonmaru-cho, Kaminihonmaru-cho, Shinnihonmaru-cho, Minorigaoka-cho, Ogama-cho, Fukushima-cho, Tsuji-cho, Nakamachi, Baba-cho, Honmachi, Nakade-cho, Motomachi, Suehiro-cho, Yakiya-cho, Asahi-cho, Highland-cho, Tsukushigaoka-cho Eda, Kamiyama, Tashiro, Hata, part of Nishi
Nichiei Hino (TEL.0748-53-3941)	August 4 (Fri)	August 11 (Fri/holiday) to August 15 (Tue)	Tsuehama-cho	Ono School District
			Koka-cho	Ohara School District (apart from Sagami and Ohara Ichiba), Aburahi School District, Sayama School District
			Konan-cho	All of Konan-cho
Hirose (TEL.0748-52-0943)	August 4 (Fri)	August 11 (Fri/holiday) to August 15 (Tue)	Tsuehama-cho	Ayukawa School District, Yamauchi School District, Tsuehama School District
			Koka-cho	Sagami, Ohara Ichiba
			Shigaraki-cho	Nagano Atago-cho, Zaimoku-cho, Taisho-cho, Shinmachi, Matsuo-cho, Minami Matsuo-cho, Sakae-cho Kumoi School District, Obara School District (excluding part of Nishi), Asamiya School District, Tarao School District

Inquiries

Consumer and Environmental Protection, Consumer and Environmental Protection (Seikatsu Kankyo Ka)
TEL.0748-69-2145 / FAX.0748-63-4582

Town Meeting “Multicultural Center for Everyone”

Dates 10:00 am to noon, September 2 (Sat) **Place** Kafuka Hall, Minakuchi Central Community Center (Minakuchi Chuo Kominkan)

Details We would like to hear your opinions on the role, functions, and ways to make use of the “Multicultural Center”, which is scheduled to open in the 2024 fiscal year. Let's think it over together.

How to apply Application Form, Telephone, FAX **Application Deadline** August 31 (Thu)

Inquiries & applications

Diversity and Inclusion, Community Activities (Shimin Katsudou Suishin Ka)
TEL.0748-70-3721 / FAX.0748-70-6046

[Application Form](#) ▶



Large-Scale Summer Vacation Period in City Hall August 14 (Mon), 15 (Tue), 16 (Wed)

During this period, many departments will have a large proportion of their staff on summer vacation, and will be operating with a minimum number of staff. We apologize for the inconvenience, and ask for your understanding and cooperation.

Where City Hall buildings

However, the following departments, such as the front desk service, and Community Civic Centers and other destination organizations will continue to operate as usual. For other facilities, they will be working according to their own schedules.

● Business as usual in

City Hall buildings	(1F) Citizens' Affairs (Shimin Ka), Health Insurance and Pension (Hoken Nenkin Ka), Consumer and Environmental Protection (Seikatsu Kankyo Ka), Consumer Life Center (Shouhi Seikatsu Center), Taxation Affairs (Zeimu Ka), Accounting (Kaikai Ka), Customer Support Center for Water and Sewer (Joge Suido Ryokin Okyaku-sama Center), Inclusive Community Promotion (Chiiki Kyosei Shakai Suishin Ka), Public Assistance (Seikatsu Shien Ka), Services for People with Disabilities (Shogai Fukushi Ka), Family/Child Consultation (Katei Jido Sodan Shitsu), Senior Welfare (Choju Fukushi Ka), Health Support (Sukoyaka Shien Ka)
	(2F) Child Rearing Policy (Kosodate Seisaku Ka), Nursery School and Kindergarten (Hoiku Yochien Ka), COVID-19 Response Office (Shingata Coronavirus Kansensho Taisaku Shitsu) (Annex)
Community Civic Centers and other destination organizations	
Business will be carried out as usual.	

Inquiries Human Resources (Jinji Ka) TEL.0748-69-2122 / FAX.0748-63-4086

Don't Dump Garbage in the Waterways!

A lot of large-size refuse and general household trash is dumped in farming irrigation waterways.

Not only do they obstruct the flow of water, but they also cause blockages, causing water to overflow from the waterways and inconvenience residents in the neighborhood.

When cutting grass around waterways, please take care not to let the cut grass fall in.

In addition, accidents involving people falling into farming irrigation waterways and reservoirs are frequent. We ask for your cooperation in preventing water-related accidents by encouraging people in your family and community to stay away from and not play in reservoirs and irrigation waterways.

Inquiries

Agricultural Facility Maintenance (Noson Seibi Ka) TEL.0748-69-2195 / FAX.0748-63-4592
Yasu River Land Improvement District TEL.0748-62-1154 / FAX.0748-63-0674

J-Alert Nationwide Information Transmission Testing will be held on August 23

We ask for your understanding and cooperation in conducting the National Instant Alert System (J-Alert) test.

Dates 11:00 am, August 23 (Wed) **Coverage** All of Koka City

Details Broadcast by audio broadcast terminals and outdoor loudspeakers

Mail (AI-Koka Emergency Mail subscribers who have signed up to receive disaster information alerts)

Inquiries Disaster and Crisis Management, Risk Management (Kiki Kanri Ka) TEL.0748-69-2103 / FAX.0748-63-4619

Japanese Language Classes are Being Held for Foreign Residents!

Student interviews for classes will be held on the day of your choice. (Advance registration required)

● Monday Rainbow Class

Dates From 2:00 pm, August 28 (Mon)

Place Maroom

● Saturday Ninja classes

Dates From 7:00 pm, August 19 (Sat)

Place Minakuchi Central Community Center (Minakuchi Chuo Kominkan)

*Please contact the Koka International Society if you wish to study on other days.

Inquiries & applications

Koka International Society TEL.0748-63-8728 / FAX.0748-70-6468
Email: mifa@mx.biwa.ne.jp

August After-hours Counter (every Tuesday until 7:00 pm): August 1, 8, 15, 22, and 29

Every Tuesday the Koka City Hall Citizens' Affairs (Shimin Ka) is open until 7:00 pm, so you can complete administrative procedures such as having certificates issued (family register, resident register, tax certificate, etc.) or registering your personal seal.

*Please note that Individual Number Card administrative procedures and residence-related changes (moving/relocating, etc.) cannot be handled at the After-hours Counter.

Notice from Maina-chan

You can use your Individual Number Card to get a copy of various certificates at convenience stores. (Please contact us at the following telephone number for the applicable certificates.)

Inquiries Citizens' Affairs (Shimin Ka)
TEL.0748-69-2138
FAX.0748-65-6338

Monthly Tax Payments

The due date for tax payments this month is **August 31 (Thu)**.

- Municipal and prefectural residences tax (2nd installment)
- National Health Insurance tax (3rd installment)
- User fees (Nursery school fees and nursery school lunch fees)
- Nursing-care insurance premium (3rd installment)
- Water fees
- Medical Insurance premiums for older senior citizens

Please use the convenient direct debit system for your tax payments.

Consultation content/Contact

Date

Time

Location

Life and Work Consultations (Public Assistance Counter)*

Advice is available for concerns about daily life and work. *No need to apply Responders: Consultation support staff, and employment support staff

Contact Public Assistance, Public Assistance (Seikatsu Shien Ka)
TEL.0748-69-2158 / FAX.0748-63-4085

Every week, from Monday to Friday (except public holidays)

8:30 am to 5:15 pm

Public Assistance Desk, Public Assistance (Seikatsu Shien Ka), 1F, Koka City Hall

Consumer Affairs Consultations

Advice is available for concerns about consumer affairs, such as products, purchase agreements and other contracts. Responders: Consumer affairs counsellors

Contact Consumer Life Center (Shouhi Seikatsu Center)
TEL.0748-69-2147 / Consumer Hotline: 188 (no area code)

Every week, from Monday to Friday (except public holidays)

9:00 am to 5:00 pm

Consumer Life Center (Shouhi Seikatsu Center), 1F, Koka City Hall

School-age Children Consultations

This consultation counter is for school-age children (elementary to high school) and their parents/guardians and other family members. We are ready to listen and offer advice on matters about school, daily life, and parenting. Responders: Counsellors for school-age children

Contact Child Rearing Policy, Child Rearing Policy (Kosodate Seisaku Ka)
TEL.0748-69-2176 / FAX.0748-69-2298

Every week on Monday, Wednesday, and Friday (except public holidays)

8:30 am to 5:15 pm

Child Rearing Policy (Kosodate Seisaku Ka), 2F, Koka City Hall
You can also make inquiries using the Child-Rearing Concierge Inquiry Form.



Parenting and Study Consultations*

We are ready to listen and offer advice on matters about your child's development and emotional/mental concerns. *Please make an appointment by phone or fax.

Eligible persons: Generally children aged 4 years or older, elementary and middle & senior high school students, adolescents and young adults (up to around 25 years old)

*For consultations regarding children aged 4 or younger, please contact your local health care (Hoken) center.

Contact Appointments Development Support (Hattatsu Shien Ka)
TEL.0748-69-2178 / FAX.0748-69-2298 (Hours: 9:00 am to 5:00 pm)

Kindergartens/nurseries and schools, Koka City Hall, etc.

Youth School Absenteeism & Hikikomori Consultation

We are ready to listen and offer advice on matters related to school absenteeism and hikikomori for youth up to around 25 years old who have completed compulsory education.

Contact

Development Support (Hattatsu Shien Ka)
TEL.0748-69-2179
(Hours: 9:00 am to 5:00 pm)

Youth Concerns Consultations*

We are ready to listen and offer advice on matters concerning young people, including school absenteeism, bullying, misbehaving, delinquency, friendships, and pursuing further education or finding work.

*From Monday to Friday, 9:00 am to 4:00 pm (except public holidays and end-of-year holidays). Consultations can also be made by phone and email.

Contact

Youth (Shonen) Center (2F, Minakuchi Central Community Center (2F, Minakuchi Chuo Kominkan))
TEL.0748-62-6010
FAX.0748-63-3977
Email: k-syonen@city.koka.lg.jp



Editor & Publisher

Koka City Hall

6053 Minakuchi, Minakuchi-cho, Koka City 528-8502

TEL.0748-65-0650 / FAX.0748-63-4086

Hours: 8:30 am to 5:15 pm (except for the After-hours Counter on Tuesday)

Please check the Koka City website and Facebook page for Koka City information.

Koka City website

<https://www.city.koka.lg.jp/>

Koka City Facebook page

<https://www.facebook.com/city.koka>

Koka City website



Koka City Facebook page

