



COVID-19 Vaccine Information

● Vaccinations at group vaccination sites to end in December

Vaccinations offered at group vaccination sites since September 28 will end in late December. Free shuttle bus services will also end at that time. Those who wish to be vaccinated at the group vaccination site should do so as soon as possible.

Note that vaccinations will continue to be offered at individual vaccination medical institutions within the city.



◀ List of individual vaccination medical institutions

● Shigaraki group vaccination site to be moved to a new location

New location: Shigaraki Central Hospital

● Special temporary vaccination period to end in March 2024

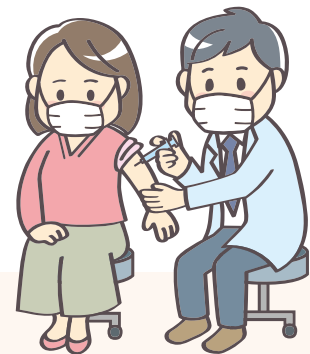
The special temporary COVID-19 vaccination period will end on March 31, 2024. Vaccinations are available for free during this period.

Group vaccination schedule for December



Consultation Center and Call Center to close for New Year's holidays (Dec. 29 to Jan. 3)

COVID-19 Response Office Consultation Center
TEL.0748-69-2154
COVID-19 Vaccination Call Center
TEL.0120-102-852



Inquiries

COVID-19 Response Office Consultation Center
TEL.0748-69-2154 (Mon. to Fri. 9:00 to 5:00 pm)

Information on Service during New Year's Holidays

Closed

December 29 (Fri) to January 3 (Wed)

Service desk services

Reception for marriage, birth, and death notifications, etc. is available night and day even when city hall is closed.

During the following period, you will be unable to use convenience store delivery for printing your family register, resident register, seal impression certificate, tax certificate, or certificate of income.

[No service period]

December 29 (Fri) to January 3 (Wed)



Starting January 2024

Increase in Facilities Accepting the Free Temporary Childcare Voucher

The number of facilities that accept the Free Temporary Childcare Voucher, distributed for children between 6 months old and 1 year and 6 months old who are not enrolled in a daycare center, will be increased from January 2024.

[Facilities being added]

- Minakuchi Kita Nursery School
- Konan Nursery School
- Konan Nozomi Nursery School

*Individuals who already have a free voucher are permitted to use the newly added facilities.

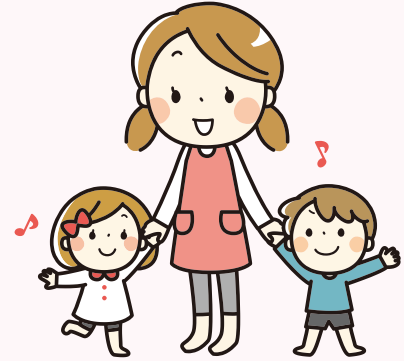
*Please check the Koka City website for details.

Inquiries

Nursery School and Kindergarten (Hoiku Yochien Ka)
TEL.0748-69-2180 FAX.0748-69-2298



▲ Koka City website



Starting January 2024

Weekend/Holiday Appointments for Digital Certificate Renewal Now Available

Renewals for Individual Number Card Digital Certificates—which have until now only been available on weekdays—will be offered on weekends and holidays by appointment only starting in January 2024.

[Reserving an Appointment]

Follow the instructions on the Digital Certificate Expiration Notice (blue envelope) to reserve an appointment. (The notice will be sent by mail approx. 3 months before the expiration date indicated on the card.)

*Please check the Koka City website for details such as what is needed for renewal.

Inquiries

Citizens' Affairs (Shimin Ka)
TEL.0748-69-2138 FAX.0748-65-6338

The expiration date is indicated here.

Renewals can be processed up to 3 months in advance.



▲ Koka City website



Information for Individuals 40 to 74 Years Old Enrolled in National Health Insurance Have You Received Your Special Medical Checkup?

Free special medical checkups are available with a focus on lifestyle-related diseases such as metabolic syndrome, hypertension, diabetes, and dyslipidemia. Annual medical checkups are important to get a clear idea of your current physical condition. Medical checkup vouchers were mailed directly to eligible individuals in May or June. If you have not yet scheduled a checkup, please do so as soon as possible.

Validity Period December 28 (Thu)

Checkup Venue Koka City medical institutions (29 locations)

*For a list of participating medical institutions, please check the Koka City website.

Inquiries

Health Insurance and Pension (Hoken Nenkin Ka)
TEL.0748-69-2141 FAX.0748-63-4618



▲ Koka City website



2024 Koka City 20-Year-Olds Celebration Day

The Koka City 20-Year-Olds Celebration Day Ceremony will be held in celebration of adults who have turned 20 in the past year.



Date January 7, 2024 (Sun)

Starting at 1:00 pm

- Part 1: Commemorative Ceremony (2:00 pm to 2:30 pm)
- Part 2: Commemorative Event (2:40 pm to 3:30 pm)

Venue Aikoka Citizens' Hall

Eligibility

Those who were born between April 2, 2003, and April 1, 2004, and meet one of the following conditions:

1. Is a registered resident of Koka City
2. Does not currently live in Koka City but has attended school in Koka City or works in Koka City and wants to attend the Koka City 20-Year-Olds Celebration Day Ceremony

Invitations

Eligible persons will receive an invitation postcard in the mail. Please bring this invitation with you to the event. Invitations will be sent to individuals currently registered as a resident of Koka City. If you have not received an invitation or live outside of Koka City, please submit an application to participate in the event from the Koka City website. Information will be sent to the mailing address reported on the participation application at a later date.

Other

- Only those participating in the event will be permitted to enter the venue. Persons requiring assistance or an attendant are asked to notify Koka City in advance (see Inquiries below).
- Please check the Koka City website or contact us below for details.

Organizer 20-Year-Olds Celebration Day Organizing Committee, Koka City Board of Education, Koka City



▲ Koka City website

Inquiries

Youth Development, Social Education (Shakai Kyoiku Sports Ka)
TEL.0748-69-2248 FAX.0748-69-2293

A Day to Reflect on Life

December 1 is the Day of Life in Japan. Established by the Ministry of Health, Labour and Welfare in 2001, this day is meant as a day of reflection on life.

On this day, individuals struggling in life are encouraged to talk to a family or friend for help. Not everyone has someone to talk to, and some people don't want to talk, but being heard is important. If you need someone to talk to about anything, remember that you are not alone, and a variety of helpful Consultation Services are available. The Day of Life is all about helping each other protect the preciousness of life.



◆ Consultation Services (Feel free to call at any time.)

● Counseling Hotline

TEL.077-567-5560

(Every day except New Year's holidays, [1] 10:00 am to 12:00 pm and [2] 1:00 pm to 9:00 pm)

● Shiga Life Hotline

TEL.077-553-7387 (Fri. to Mon., 10:00 am to 8:30 pm)

● Kyoto Life Hotline

TEL.075-864-4343 (Available year-round, 24 hours a day)

● Koka City Health Support (Sukoyaka Shien Ka)

TEL.0748-69-2168 (Weekdays, 8:30 am to 5:15 pm)

December 3 to December 9 Is Disability Awareness Week

Disability Awareness Week was established with the dual goals of deepening awareness and understanding among the general populace of welfare for those with disabilities and motivating disabled people to participate in activities in all areas of society, economy, culture, and so on.

◆ Do You Know about the “Help Mark”?

The Help Mark is a nationwide mark for those who require assistance or consideration from those around them. Out there in the world, there are people with disabilities or other troubles that are not visible at first.

If you see someone with this mark during your daily activities, please give up your seat on the train or bus, and otherwise show a spirit of help and consideration in situations of need.

It is also important to help those with disabilities during extreme circumstances like traffic accidents and natural disasters.

▼ This is the “Help Mark”.



Examples of individuals using the Help Mark:

Individuals with artificial legs or joints or internal disabilities

Individuals with intractable diseases, in the early stages of pregnancy, with developmental disabilities, or with dementia

Individuals with vision, hearing, or speech impairments

The Help Mark is distributed free of charge to anyone who needs it.

● Distribution Sites

Services for People with Disabilities (Shogai Fukushi Ka) and Senior Welfare (Choju Fukushi Ka); Community Civic Centers in Tsuchiyama, Koka, Konan, and Shigaraki; various Regional Comprehensive Support Centers; the Shiga Prefecture Disabled Persons' Welfare Division; Koka Public Health Center

◆ Have You Seen These Marks?



International mark for persons with disabilities

This is the universal mark indicating that a building or facility is accessible to anyone with a disability.



Mark for persons with disabilities

This mark is placed on vehicles to indicate that the driver is physically disabled.



Ear mark

This mark symbolizes a hearing impairment and is used to indicate the need for consideration, especially when communicating.



Heart Plus mark

This mark is used to indicate that a person has an internal disability (such as in the heart, respiratory system, or kidneys).

Keep Your Pipes from Freezing!

Water pipes are likely to freeze and burst if the temperature drops below -4°C . Be sure to protect your pipes to keep them from freezing and bursting this winter.

◆ Tips to prevent your pipes from freezing

- Wrap exposed pipes with styrene foam insulation or cloth to keep them from getting too cold, and wrap covered pipes in plastic tape to keep them from getting wet.
- Stuff a plastic bag filled with styrene foam or cloth inside the meter box to keep the meter from getting too cold.

◆ What to do if your pipes freeze

Cover any frozen piping with a towel and slowly pour warm water over the area to thaw it out.

◆ What to do if you'll be gone for an extended time

If your water supply will not be used for a long time because you will be away from home, frozen pipes can cause water leakage and various other unexpected problems.

Failure to detect such leaks and other problems may result in high water fees and other costs.

If you will not be using your water supply for an extended period, turn off the water at the supply valve, or follow the shut-off procedure.

Inquiries

Waterworks and Sewage General Affairs (Joge Suido Somu Ka) TEL.0748-69-2223 FAX.0748-69-2295
Waterworks (Jo Suido Ka) TEL.0748-69-2226 FAX.0748-69-2295

New Year's Holiday: **Collection Schedule for Household Garbage and Manure Pumping**



• Household garbage

There is a possibility that the volume of waste during the New Year's holidays will be exceptionally large, and the normal collection time and route may be changed significantly. Please make absolutely sure to take out your garbage on the collection day before 8:00 am. Collection items and collection days may differ from normal, so please check the garbage collection calendar. (The garbage collection calendar can be viewed at City Hall and various Community Civic Centers, or on the website.)

Household garbage delivery facilities (Eco Stations and the Koka Wide-Area Administrative Kumiai Eisei [Sanitation] Center)

Closed December 31 (Sun) to January 3 (Wed)

*For the landfill site, please see the garbage collection calendar.

*For sending large-size burnable waste (anything with a combined height, width, and length of 80 cm or more), you need to make a reservation at least one day in advance. (TEL.0748-62-5454)

• Oversized garbage

Area	Contractor	Collection application deadline	Final collection date
Minakuchi-Shigaraki area	Minakuchi Technos Co., Ltd. (TEL.0748-62-5311)	December 11 (Mon)	December 19 (Tue)
Tsuchiyama area	Hirose Co., Ltd. (TEL.0748-52-0943)	December 20 (Wed), before noon	December 21 (Thu)
Koka-Konan area	Nichiei Hino Co., Ltd. (TEL.0748-53-3941)	October 8 (Fri)	December 21 (Thu)

*To apply, please contact your region's designated contractor directly.

*Depending on how busy things are, the schedule may be subject to change, so please contact the contractor as soon as possible.

• Manure pumping

Contractor	December	January	District	Neighborhood							
	Off-schedule manure pumping application deadline	Reopening									
Minakuchi Technos Co., Ltd. (TEL.0748-62-1959)	December 11 (Mon)	January 4 (Thu)	Minakuchi	All of Minakuchi-cho							
			Shigaraki	Nagano	Kita Shinmachi	Kitade-cho	Toiya-cho	Tojo-cho	Hiroshiba-cho	Higashi Nihonmaru-cho	
					Kaminihonmaru-cho	Shinnihonmaru-cho	Minorigaoka-cho	Ogama-cho	Fukushima-cho	Tsuji-cho	
					Nakamachi	Baba-cho	Honmachi	Nakade-cho	Motomachi	Suehiro-cho	
Eda	Koyama	Tashiro	Hata								
Nichiei Hino Co., Ltd. (TEL.0748-53-3941)	December 11 (Mon)	January 4 (Thu)	Tsuchiyama	Ono School District							
			Koka	Ohara School District (apart from Sagami and Ohara Ichiba)				Aburahi School District	Sayama School District		
			Konan	All of Konan-cho							
Hirose Co., Ltd. (TEL.0748-52-0943)	December 11 (Mon)	January 4 (Thu)	Tsuchiyama	All areas except Ono School District							
			Koka	Sagami Ohara Ichiba							
			Shigaraki	Nagano	Atago-cho	Zaimoku-cho	Taisho-cho	Shinmachi	Matsuo-cho	Minami Matsuo-cho	
					Sakae-cho						
Kohara	Tarao	Kumoi	Asamiya								

*Pumping cannot be performed during the holidays without an appointment, so please contact the collection contractor as soon as possible to request service.



Inquiries

Consumer and Environmental Protection, Consumer and Environmental Protection (Seikatsu Kankyo Ka)
TEL.0748-69-2145 FAX.0748-63-4582

▲ Koka City website

Prevent Fires over New Year's Holidays!

Now that the weather has started to get really cold and the air has become drier, many people are no doubt keeping warm with kerosene stoves or electric heaters. As the year comes to an end and more and more people begin using heating equipment, many people also become careless when it comes to fire safety, leading to a higher risk of fire. To better protect your homes and loved ones, Koka City has created 10 points to keep you safe from fire. Please put the following habits and countermeasures into practice to prevent fires before they start.

Inquiries

Prevention Division, Koka Wide-Area
Administrative Kumiai Fire Department
Headquarters
TEL.0748-63-7932 FAX.0748-63-7940



▲ Website

10 Points to Keep You Safe from Fire

[Four Habits]

1. Don't smoke—or let your loved ones smoke—in bed.
2. Don't place burnable objects near stoves or heaters.
3. When using a cooking stove, don't let the flame out of your sight.
4. Clean around your power outlets and remove plugs that you are not using.

[Six Measures]

1. Use stoves, etc. that have safety features installed to prevent fires.
2. Check your fire alarm regularly and change it once every ten years or so to ensure early detection of fires.
*See the Koka City website for more information.
3. Keep your room clean and tidy, and use fire-retardant bedsheets, clothing, curtains, etc. to prevent fire from spreading.
4. Keep a fire extinguisher handy and make sure you know how to use it to put out fires before they grow.
5. Make sure elderly and infirm persons are prepared by teaching them the evacuation routes and methods.
6. Participate in community-wide fire prevention measures like fire prevention drills and going door-to-door.

Have You Registered for Account Transfer Yet?

Koka City seeks to encourage its residents to pay their municipal taxes and utility bills by direct deposit.

[Convenient] There's no more need to travel to City Hall or to a bank each time a payment is due. Just fill out the form for automatic transfer (direct deposit) and from next year on it will be updated automatically.

[Safe] You don't need to carry cash around with you.

[Reliable] It's impossible to forget to make a payment, and you can check your payment history with the record in your passbook.

Registration Procedure

(1) Fill out the necessary information on the direct deposit application form, and affix your seal (the same one as used for your passbook).

(2) Submit the form to the counter of the financial institution where you wish to make the transfer.

*Application forms are available in your local bank or other financial institution. Normally, payment will begin from the month after you make the application.

Participating Financial Institutions

Shiga Bank, Kansai Mirai Bank, Koka Agricultural Cooperative, Koto Shinkin Bank, Shiga Prefecture Credit Union, Bank of Kyoto, Kinki Rokin, Green Omi Agricultural Cooperative, Shiga Kenmin Credit Union, Japan Post Bank, post office

Inquiries

Tax Filing Office, Taxation Affairs (Zeimu Ka) TEL.0748-69-2130 FAX.0748-63-4574

[Collection Reinforcement] Pay Your Taxes! Are You Sure You Haven't Forgotten?

To ensure fair distribution of the tax burden, Shiga Prefecture and Koka City will be simultaneously reinforcing non-payment prevention measures in December.

If tax payments are not received by the specified due date, the government may be forced to seize savings or wages, search tax evaders' homes, etc.

If you are unable to submit your payment on time, contact us as soon as possible to avoid having your assets seized.

Disposition process for failure to pay

(1) Request for payment A payment reminder will be sent if payment is not made by the due date.

(2) Asset inspection/search An inspection of your assets will be conducted at your financial institution, workplace, and home.

(3) Seizure Your assets such as wages, deposits, real estate, automobiles, and other personal property will be seized.

(4) Conversion/appropriation Your seized assets will be collected or sold at public auction to be converted into cash. The converted funds will be used to pay your delinquent taxes.

Inquiries

(Municipal taxes) Delinquent Tax Office, Taxation Affairs (Zeimu Ka) TEL.0748-69-2131 FAX.0748-63-4574

(Prefectural taxes) Koka Taxation Division, Central Shiga Prefectural Taxation Office TEL.0748-63-6106 FAX.0748-63-0439

December After-hours Counter (every Tuesday until 7:00 pm): December 5, 12, 19, and 26

Every Tuesday the Koka City Hall Citizens' Affairs (Shimin Ka) is open until 7:00 pm, so you can complete administrative procedures such as having certificates issued (family register, resident register, tax certificate, etc.) or registering your personal seal.

*Please note that Individual Number Card administrative procedures and residence-related changes (moving/relocating, etc.) cannot be handled at the After-hours Counter.

Notice from Maina-chan

You can use your Individual Number Card to get a copy of various certificates at convenience stores. (Please contact us at the following telephone number for the applicable certificates.)

Inquiries

Citizens' Affairs (Shimin Ka)
TEL.0748-69-2138
FAX.0748-65-6338

Monthly Tax Payments

The due date for tax payments this month is January 4 (Thu).

- Fixed Property Tax (Period 3)
- National Health Insurance tax (7th installment)
- User fees (Nursery school fees, Kindergarten and Nursery school lunch fees)
- Nursing-care insurance premium (7th installment)
- Medical Insurance premiums for older senior citizens
- Water fees

Please use the convenient direct debit system for your tax payments.

Consultation content/Contact

Date

Time

Location

Life and Work Consultations (Public Assistance Counter)*

Advice is available for concerns about daily life and work. *No need to apply Responders: Consultation support staff and employment support staff

Contact Public Assistance, Public Assistance (Seikatsu Shien Ka)

TEL.0748-69-2158/FAX.0748-63-4085

Every week, from Monday to Friday (except public holidays)

8:30 am to 5:15 pm

Public Assistance Counter, Public Assistance (Seikatsu Shien Ka), 1F, Koka City Hall

Consumer Affairs Consultations

Advice is available for concerns about consumer affairs, such as products, purchase agreements, and other contracts.

Responders: Consumer affairs counselors

Contact Consumer Life Center (Shouhi Seikatsu Center)

TEL.0748-69-2147/Consumer Hotline: 188 (no area code)

Every week, from Monday to Friday (except public holidays)

9:00 am to 5:00 pm

Consumer Life Center (Shouhi Seikatsu Center), 1F, Koka City Hall

Pension Consultations

Consultants: Kusatsu Pension Office staff *By appointment only, first-come-first-served basis

Contact Appointments Kusatsu Pension Office

TEL.077-567-2220/FAX.077-562-9638

January 11 (Thu)
*Held every second month

10:00 am to 3:00 pm

2F Meeting Room 202, Koka City Hall

School-age Children Consultations

This consultation counter is for school-age children (elementary to high school) and their parents/guardians and other family members.

Responders: Counselors for school-age children

Contact Child Rearing Policy, Child Rearing Policy (Kosodate Seisaku Ka)

TEL.0748-69-2184/FAX.0748-69-2298

Every week on Monday, Wednesday, and Friday (except public holidays)

8:30 am to 5:15 pm

Child Rearing Policy (Kosodate Seisaku Ka), 2F, Koka City Hall

You can also make inquiries using the Child-Rearing Concierge Inquiry Form.



Young Carer Support

Consultations about concerns and troubles of young carers, and consultations with local residents and persons in related fields, are available.

Contact Child Rearing Policy, Child Rearing Policy (Kosodate Seisaku Ka)

TEL.0748-69-2184/FAX.0748-69-2298

Parenting and Study Consultations*

We are ready to listen and offer advice on matters about your child's development and emotional/mental concerns. *Please make an appointment by phone or fax.

Eligible persons: Generally children aged 4 years or older, elementary and middle & senior high school students, adolescents and young adults (up to around 25 years old)

*For consultations regarding children younger than 4 years old, please contact your local health care (Hoken) center.

Contact Appointments Development Support (Hattatsu Shien Ka)

TEL.0748-69-2178/FAX.0748-69-2298 (Hours: 9:00 am to 5:00 pm)

Kindergartens/nurseries and schools, Koka City Hall, etc.

Youth School Absenteeism & Hikikomori Consultation

We are ready to listen and offer advice on matters related to school absenteeism and hikikomori for youth up to around 25 years old who have completed compulsory education.

Contact

Development Support (Hattatsu Shien Ka)

TEL.0748-69-2179 (Hours: 9:00 am to 5:00 pm)

Youth Concerns Consultations*

We are ready to listen and offer advice on matters concerning young people, including school absenteeism, bullying, misbehaving, delinquency, friendships, and pursuing further education or finding work.

*From Monday to Friday, 9:00 am to 4:00 pm (except public holidays and end-of-year holidays). Consultations can also be made by phone and email.

Contact

Youth (Shonen) Center (2F, Minakuchi Central Community Center (2F, Minakuchi Chuo Kominkan))

TEL.0748-62-6010/FAX.0748-63-3977

Email:k-syonen@city.koka.lg.jp



Editor & Publisher

Koka City Hall

6053 Minakuchi, Minakuchi-cho, Koka City 528-8502

TEL.0748-65-0650/FAX.0748-63-4086

Hours: 8:30 am to 5:15 pm (except for the After-hours Counter on Tuesday)

Please check the Koka City website and Facebook page for Koka City information.

Koka City website

<https://www.city.koka.lg.jp/>

Koka City Facebook page

<https://www.facebook.com/city.koka>

Koka City website



Koka City Facebook page

