



Let's face the novel coronavirus together with ALL KOKA!

Don't get infected!

Don't spread it to others!

Three requests from Koka City

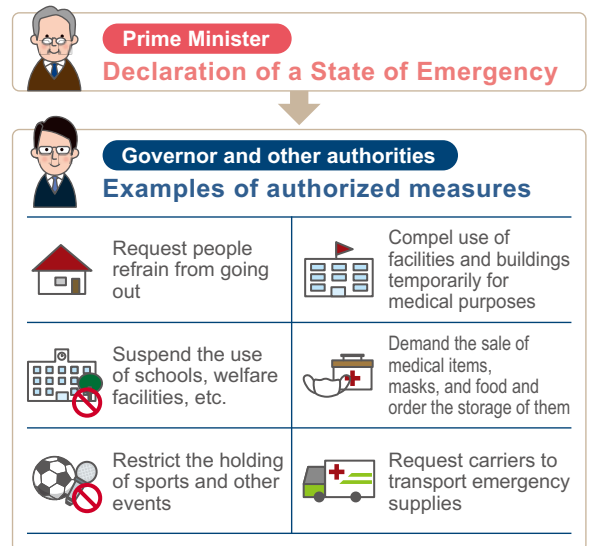
- 1 Refrain from going out whenever possible.**
(Except for hospital visits, grocery shopping, commuting, and jogging and walking outdoors.)
- 2 To the extent possible, adopt split shifts and staggered working hours, and commute to work in your own car.**
(Take time off from work as soon as possible if you feel unwell.)
- 3 Make sure to avoid confined spaces, crowded places, and close contact with others (3Cs) as well as any combination of them.**

Closure of schools and requests for voluntary restraints may be extended in the future depending on the status of the declared state of emergency. Let's all reflect on our actions to protect ourselves and our loved ones.

Contact Secretariat of the Koka City Novel Coronavirus Response Headquarters (Risk Management(Kiki Kanri Ka)) Tel: 0748-69-2103 Fax: 0748-63-4619

What is a Declaration of a State of Emergency?

At this time, a declaration has been issued to prevent the spread of novel coronavirus (COVID-19) infections. For the period and areas specified in the declaration, governors and other authorities may, for example, request people refrain from nonessential and nonurgent outings and restrict the use of schools and other facilities where people gather.



How is the virus transmitted?

At present, it is believed that the virus is transmitted mainly by airborne droplets or direct contact. It is considered that there is a risk of the infection spreading in confined spaces and places with many people conversing at close range, even if one has symptoms such as coughing or sneezing.

1. Droplet infection

The virus is contained in the coughs, sneezes, saliva, etc., of infected people, and other people become infected by inhaling it via the mouth or nose.

2. Contact infection

If an infected person covers their nose or mouth with a hand when coughing or sneezing and then touches an object with that hand, the virus is transferred to surface of the object. When another person touches the object with a hand and then touches their mouth or nose with that hand, infection occurs via mucous membranes.

We touch a wide variety of objects, such as doorknobs and chairs, in everyday life. So, make sure to wash your hands frequently, especially when arriving home and before and after cooking.

If you have these symptoms...

If you have the following symptoms, please consult the Call Centers for Japanese Returnees and Potential Contacts immediately.

* Contact us as soon as possible if you are elderly or pregnant; have an underlying condition such as diabetes, cardiac failure, or a respiratory disease; or receive dialysis.

- Have had cold symptoms and/or a fever of 37.5 degrees centigrade or higher for four days or more.
- Feel a strong sense of fatigue and/or have difficulty breathing.

* If you feel unwell, even if only slightly, make sure to monitor your physical condition regularly, such as by taking your temperature.

Call Centers for Japanese Returnees and Potential Contacts

- Pharmaceutical and Infectious Disease Prevention Office, Shiga Prefecture (available 24 hours a day)
Tel: 080-2470-8042
- Koka Hoken Jo (open weekdays from 8:30 to 17:15)
Tel: 080-8527-5165

Other consultation services

- General consultation service
Koka Hoken Jo (open weekdays from 8:30 to 17:15)
Tel: 0748-63-6148

Beware of fraud taking advantage of COVID-19!

Many cases of COVID-19-related fraud and attempts to obtain personal information have been reported. Some examples of cases are described below. If you experience such a situation, pay careful attention and respond calmly. If you note anything that seems strange, even something small, ask a family member or other trusted person for advice.

Example 1 Told that it is necessary to register a bank account to receive a subsidy and maneuvered into going to an ATM to register.

Example 2 Asked to divulge your address and other personal information to receive masks for free.

Example 3 Received an envelope containing 30 disposable masks by delivery service.

Beware of false information, too!

It is important to not believe rumors, like those concerning a lack of stock of toilet paper and other daily necessities in stores—which turned out to be false information—but instead to act based on accurate information. In addition, we ask that you refrain from stocking up or urgently buying food because a sufficient supply of food has been secured. Please contact us if you have any concerns.

Contact

- Koka City Consumer Affairs Center Tel: 0748-69-2147 Fax: 0748-63-4582 Tel: 188 (no prefix)
- Koka Police Station Tel: 0748-62-4155

Support programs related to COVID-19 (as of April 17, 2020)

Major programs are listed below. This information will be kept up to date on the Koka City Website.

Support for individuals

Applicant	Problem	Programs and procedures	Description	Contact
Individual	Cannot maintain household budget due to a temporary absence from work	Emergency small loans	Special loans are provided to households that have difficulty maintaining their household budgets due to a decrease in income as a result of a temporary absence from work as well as to households that need money for living expenses due to unemployment and other reasons.	Koka City Social Welfare Council (Weekdays) Tel: 62-8085 (Holidays) Tel: 090-6735-1098
	Cannot maintain household budget due to unemployment	General support loans		
	Have become or are about to become homeless due to loss of employment or other reason	Benefits to ensure housing	Housing allowances are provided to eligible persons who have lost their homes and have left a job or closed a business within the past two years or have experienced a similar level of income decrease as in the case of leaving a job due to a leave of absence or other reason.	Public Assistance (Seikatsu Shien Ka) Tel: 0748-69-2158
	Have difficulty paying taxes, fees, utility charges, etc.	Exemption from national pension premium payment	You may be exempt from payment of premiums if you have difficulty making payment due to unemployment, closure of a business, a temporary layoff, or other reason.	Kusatsu Pension Office Tel: 077-567-2220 Health Insurance and Pension (Hoken Nenkin Ka) Tel: 0748-69-2140
		Deferment of national tax payment	You may be allowed to pay taxes or fees in installments or delay payment if you have difficulty making payments due to difficulties in maintaining a business, a significant decrease in income, or other reason.	Minakuchi Tax Office Tel: 0748-62-0314
		Deferment of municipal tax payment		Taxation Affairs (Zeimu Ka) Tel: 0748-69-2131
		Exemption, reduction, or postponement of the payment of long-term care insurance premiums and nursing care service fees	You may be allowed to pay premiums or fees in installments or delay payment or be exempted from payment in whole or in part if you have difficulty making payments due to difficulties in maintaining a business, a significant decrease in income, or other reason.	Senior Welfare (Choju Fukushi Ka) Tel: 0748-69-2165
		Exemption, reduction, or postponement of the payment of rent for municipal housing	Tenants in municipal housing who have experienced a significant decrease in monthly income due to special circumstances may be allowed to delay payment of rent or may be exempted from payment in whole or in part.	Public Housing Construction (Jutaku Kenchiku Ka) Tel: 0748-69-2212

We provide health counselling by telephone (until COVID-19 infections stop spreading)

With the cancellation of screening and health checkups, Hoken (health) Centers will newly implement health counselling by telephone for issues such as the prevention of lifestyle-related diseases and loss of muscle strength.

• **Time and date:** Twice a week at each Hoken Center
From 8:30 to 12:00 (except public holidays and year-end and New Year holidays)

	Mon.	Tue.	Wed.	Thu.	Fri.
Minakuchi Hoken Center (Tel: 0748-62-5336)	○				○
Tsuchiyaama Hoken Center (Tel: 0748-66-1105)	○		○		
Koka Hoken Center (Tel: 0748-88-6556)	○				○
Konan Hoken Center (Tel: 0748-86-5934)	○		○		
Shigaraki Hoken Center (Tel: 0748-82-3113)	○	○			

* To prevent the spread of COVID-19 infections, please contact us by telephone for counselling.

Contact Health Support (Sukoyaka Shien Ka) Tel: 0748-69-2168 Fax: 0748-63-4085

Notice of the cancellation of cancer screening and group basic health checkups (scheduled from May to July)

To prevent the spread of COVID-19 infections, group cancer screening, group basic health checkups, and health checkups for mothers (scheduled from May to July) have been canceled.

Regarding screening and health checkups later in the year (from September), we will consider the situation, and as soon as a decision is made, we will announce it via the KOKA City's newsletter and website.

Supporting life with ALL KOKA

Some of the subsidies to support the lives of residents are introduced below.

ALL KOKA!

Subsidies for support of childcare and renovation projects for promotion of settlement

Applications can also be made by post

● Application deadline

Applications must arrive no later than May 29 (Fri.)

* If the applications received would exceed the budget for the subsidy category, recipients will be selected in an open drawing. We will continue to accept applications unless the budget is exceeded.

● How to apply

Fill out the designated application form, affix your seal to it, and submit the form with accompanying documents to the Commerce, Industry, and Labor Administration Division or a community center (chiiki shimin center). By post, send it to the Commerce, Industry, and Labor Administration Division.

● Eligible construction work

Construction work is eligible when it meets all of the following conditions (1 to 3):

(1) The renovation order is placed with a contractor (including subcontractors) that has its headquarters in Koka City.

(2) The work can be started and completed during the period of April 1, 2020, to March 31, 2021.

(3) The cost of the construction work to be covered by the subsidy is 100,000 yen or more.

* Construction work that has received any subsidies under other programs and persons or houses that have received a renovation subsidy in the past are not eligible.

* Some construction work, including exterior work and construction work performed by contractors from outside the city, are not eligible for the subsidy.

● Matters in common

• The maximum amount of a subsidy is increased by 100,000 yen if Biwako Zai (timber locally produced in Shiga) is used.

• The maximum amount of a subsidy is increased by 500,000 to 1 million yen for households that have returned or moved from other areas and include a junior high school student or younger child.

* For details, see the KOKA city's website.



● Support of childcare and renovation projects for promotion of settlement

Households and budget	Household category	Conditions for households to receive a subsidy	Amount of the subsidy
Households raising children 8 million yen	Households raising children	A junior high school student or younger child (or a pregnant woman) is living in the household as of April 1, 2020.	[Subsidy rate] 20% of the cost of the eligible construction work [Maximum amount of the subsidy] 200,000 yen
Welfare households 11 million yen	Households with elderly members*	A person aged 75 or older (born on or before April 2, 1945) is living in the household as of April 1, 2020.	[Subsidy rate] 20% of the cost of the eligible construction work [Maximum amount of the subsidy] 100,000 yen
	Households with disabled members	A person with an identification booklet for the disabled is living in the household.	
General households 10 million yen	General households	Households other than those mentioned above	

● Renovation projects for promotion of three-generation cohabitation or settlement nearby

● Renovation projects for promotion of utilization of vacant buildings

● Renovation projects for modern "ninja" houses, etc.

Contact

Commerce, Industry, and Labor Administration (Shoko Rosei Ka) 6053 Minakuchi, Minakuchi-cho, 528-8502
Tel: 0748-69-2188 Fax: 0748-63-4087

ALL KOKA!

Subsidy for complete medical checkup fees

National Health Insurance subscribers aged 40 or older can receive a subsidy for complete medical checkup fees.

● **Eligibility:** Those who meet all of the following conditions are eligible:

- (1) Aged 40 to 74 and enrolled in the Koka City National Health Insurance program
- (2) Belong to a household with no overdue payments of national health insurance taxes
- (3) Plan to have a complete medical checkup covering all of the check items of the specified health checkup no later than March 31, 2021
- (4) Plan to have no special health checkups within the same fiscal year

● **Subsidy amount:** Half of the expenses for the medical checkup (up to 20,000 yen)

* Up to 30,000 yen if the medical checkup includes a brain checkup
* The subsidy is provided only once per fiscal year.

● **How to apply for the subsidy:** Submit a preliminary application before the date of the complete medical checkup and an application for payment of the subsidy after the checkup at one of the following locations.

Preliminary application (before date of complete medical checkup)

Bring your National Health Insurance certificate, seal, and specified health checkup slip (to be delivered from late May)

Application for payment of the subsidy (after checkup)

Bring your National Health Insurance certificate, checkup results, receipts, documents showing the bank account for the transfer, and seal

* We will make photocopies of the checkup results and receipts.

● **Places for the application:** Health Insurance and Pension Division, Koka Ohara, Konan Daiichi, or Shigaraki Chiiki Shimin Center

Contact

Health Insurance and Pension (Hoken Nenkin Ka) Tel: 0748-69-2141 Fax: 0748-63-4618

In May, opening hours will be extended (until 19:00 every Tuesday) on May 12, 19, and 26.

The Shimin Ka of Shiyakusho has extended its opening hours, to 19:00 every Tuesday for the issuance of family registers, residence certificates, tax certificates and other certificates, seal registration and other services.

* Note that some services are not available after normal opening hours even on these days. Please contact the Civic Affairs Division for the available services.



Information from Maina-chan

You can obtain various certificates at convenience stores with your "My Number" card. For the available types of certificates, please contact the Civic Affairs Division.

Contact Citizens' Affairs (Shimin Ka) Tel: 0748-69-2138 Fax: 0748-65-6338

Taxes to be paid this month

The due date is June 1 (Mon.).

- Fixed asset tax (1st term)
- Light vehicle tax (discount by class) (whole term)
- National health insurance tax (2nd term)
- Expenses borne by users (childcare fee, kindergarten/nursery lunch fee)
- Long-term care insurance premium (2nd term)
- Public sewer charges and agricultural settlement drainage facility charges

It is convenient to use account-to-account transfers for payments.



Register for Ai Koka Emergency Mail for your safety and security



Koka City distributes information via the Ai Koka Emergency Mail service to protect the safety and security of residents.

Information distributed

- **Disaster information:** Information on weather conditions, earthquakes, landslide disasters, and other events that are likely to cause serious damage
- **Eyewitness information:** Information requested by police, such as information about crimes and hit-and-run accidents
- **Information on warnings:** Information about food poisoning, warnings about frequent occurrences of traffic accidents, information about air pollution, etc.

How to register

To register, please see "registration instructions" on the city's website.

(1) Send a blank email message

Address to send the blank email message: touroku@koka-city.jp

* You can also send the email via the QR code on the right.



(2) Receive an email containing an URL

An email containing an URL for a site to register the types of information you want to receive will be sent in response (from access@koka-city.jp). Access the site using the URL.

(3) Register the types of information you want to receive on the registration page

Select the types of information you want to receive and click Next. Confirm the selected items and click Register if they are correct.

(4) Receive a registration completion email

Registration is complete when an email informing you of completion of registration is sent to you.

A nationwide simultaneous information transmission test of the J-Alert system will be held on May 20

We ask for your understanding and cooperation in conducting the test.

- **Time and date:** May 20 (Wed.) 11:00
- **Coverage:** Whole city
- **Content:**
 - **Broadcast** / "This is a J-Alert test" (in Japanese) and other messages will be broadcast from audio broadcasting terminals and outdoor loudspeakers at their maximum volumes.
 - * A chime will ring before and after the broadcast.
 - **Email** / Those who have signed up for the Ai Koka Emergency Mail service and requested the distribution of disaster information will receive an email concerning the content of the test.

Contact Risk Management (Kiki Kanri Ka) Tel: 0748-69-2103 Fax: 0748-63-4619

Vaccinate your children to protect them from infections



Vaccination against diphtheria and tetanus (Period 2)

The notice was sent to sixth-grade elementary school students in early April.

- **Target age for vaccination:** From 11 years old to two days before becoming 13 years old

Mixed vaccination against measles and rubella

The notice was sent to children in the senior classes of kindergartens/nurseries in early April.

- **Vaccination period:** Within the one-year period ending on March 31, 2021, prior to entering elementary school (during the period when the vaccination is provided in vaccinating medical institutions)

Matters in common

- **Vaccination cost:** Free of charge
 - **Vaccination style:** Vaccinated individually at medical institutions
- * For details, see the notice or medical exam calendar.

Contact Health Support (Sukoyaka Shien Ka) Tel: 0748-69-2169 Fax: 0748-63-4085

Edited and issued by:

Koka Shiyakusho

6053 Minakuchi, Minakuchi-cho, Koka, Shiga Prefecture 528-8502
☎0748-65-0650 FAX 0748-63-4086
Business hours: 8:30 to 17:15
(excluding days with extended opening hours)

The information in this newsletter can also be found on the city's website and Facebook page.

- Koka City Website:
<http://www.city.koka.lg.jp/>
- Koka City Facebook:
<http://www.facebook.com/city.koka>

Koka City Website



Koka City Facebook

