



## “My Number Card” Applications on Sunday August 4th

### 『マイナンバーカード』申請休日窓口

My Number Cards will be combined with health insurance cards from December 2024. Why not take this opportunity to apply for a My Number Card?

It will take about 10 minutes to apply.

You can have your portrait for the card taken on the spot.

No fee for a My Number Card application.

Note: The card will be mailed to your home about three weeks after submitting the application.

**When** From 9:00 to 16:00 on August 4 (Sun)

**Where** Shimin Ka, 1st Floor of Koka City Hall

#### Eligible Persons

Those who

- are registered residents in Koka City
- do not plan to move out of Koka City within 2 months
- have not applied for a My Number Card
- can come to the venue in person (to have their photo taken.)

#### What to Bring

One identification document with a photo such as a driver's license (if not with a photo, two documents such as a health insurance card). If you have a My Number notification card or an issuance application form with a QR code, the procedure will be easier.



See the city website for more details.

**Inquiries** Shimin Ka ☎ 69-2138 ☎ 65-6338

Koka City Website ▶

## Supplementary Benefits for Flat-rate Tax Reduction

### 定額減税補足給付金を支給します

In accordance with the flat-rate income tax and resident tax reductions implemented from June onward, supplemental benefits will be provided to those whose tax reductions are expected to be less than the flat-rate, as follows.

**Eligible Persons** Individual resident taxpayers who have been taxed by Koka City for fiscal year 2024 and whose estimated amount of income tax for fiscal year 2024 (income tax for fiscal year 2023) or income rate of resident tax for fiscal year 2024 is less than the full amount of flat-rate tax.

Note: Individual taxpayers whose total income exceeds ¥18,050,000 are not eligible.

**Amount of Benefit** The sum of (1) and (2) rounded up to the nearest ¥10,000 will be paid.

#### (1) Shortfall in income tax reduction

Full amount of flat-rate tax  
¥30,000 × (taxpayer + number of dependents)

Estimated amount of income tax  
for 2024

(1) Shortfall in  
income tax reduction

#### (2) Shortfall in resident tax reduction

Full amount of flat-rate tax  
¥10,000 × (taxpayer + number of dependents)

Estimated amount of resident tax  
for 2024

(2) Shortfall in  
resident tax reduction

The sum of (1) and (2) rounded up to the nearest ¥10,000 will be paid

#### How to Apply

Documents will be mailed in mid-August only to those who are eligible. Fill out and return the documents, by post or in person.

#### Where to Apply

Chiiki Kyosei Shakai Suishin Ka and each Chiiki Shimin Centers

**Application deadline** October 31 (Thu) Same-day postmark is valid

See the city website for more details.

**Inquiries** Chiiki Kyosei Shakai Suishin Ka ☎ 69-2280



Koka City Website ▶



# Please Submit Your Current Status Report for Receipt of Child Support Allowance or Income Status Report for Receipt of Special Child Support Allowance

児童扶養手当現況届・特別児童扶養手当所得状況届を提出してください

Those who receive Child Support Allowance or Special Child Support Allowance (including recipients whose payments are suspended due to income restrictions) are required to submit a report of their current status and income status every year.

## ① Child Support Allowance Current Status Report (Jido Fuyo Teate Genkyo Todoke)

This document is to confirm your eligibility for the allowance, taking into account your income status for the previous year and the custody status of your child. If you do not submit this form, you will not be able to receive the allowance from November onward, so please do not forget to submit it.

\*An interview is required, so please make sure that the recipient of the allowance comes to submit the form in person.

\*Information will be sent to those who are eligible.

**Submission Period** August 1 (Thu) - August 30 (Fri)

## ② Special Child Support Allowance Income Status Report (Tokubetsu Jido Fuyo Teate Syotoku Genkyo Todoke)

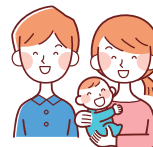
This document is to confirm your income status for the previous year and the custody status of your child. If you do not submit this form, you will not be able to receive the allowance from August onward, so please do not forget to submit it.

\*Information will be sent to those who are eligible.

**Submission Period** August 9 (Fri) - September 11 (Wed)

**Where to Apply** Kosodate Seisaku Ka and each Chiiki Shimin Centers  
For more information, please contact:

**Inquiries** Kosodate Seisaku Ka ☎ 69-2176 ☎ 69-2298



# Notice of Catch-Up Vaccinations for Cervical Cancer Prevention

子宮頸がん予防ワクチンのキャッチアップ接種

For those who have missed the regular cervical cancer prevention vaccinations, catch-up vaccinations are available until March 31, 2025. If you miss this opportunity, you will have to pay the full amount, so please complete the three vaccinations as soon as possible if you wish to receive them. For those who have never been vaccinated, the first vaccination must be completed by September 2024 in order to finish within this period.

**Eligible Persons** Women born between 1997 and 2007

**Vaccination Period** Until March 31, 2025

**Number of vaccinations** 3 times in total (if you have received regular vaccinations in the past, the remaining number of times)  
Optional vaccinations are also counted as part of the total number of vaccinations.



See the city website for details.

**Inquiries** Sukoyaka Shien Ka ☎ 69-2167 ☎ 63-4085

Koka City Website ▶



# Private Childcare Center (Kindergarten Section) Enrollment Applications for the 2025 School Year

令和7年度 私立認定こども園(幼稚園)の入園申し込み

Private childcare center enrollment applications will start soon. Please contact each childcare center directly for more detailed information.

\*Nintei Kodomoen/en: certified childcare and education center

\*\*2-year-old class accepts children from the day after their 3rd birthday

Childcare Center		Kibukawa Nintei Kodomoen* (Kindergarten Section)	Nintei Kodomoen Minakuchi Yochien (Kindergarten Section)	Kokonossu-en (Kindergarten Section)	Bantani Kujira Kodomoen (Kindergarten Section)	Nintei Kodomoen Kounan Yochien (甲南幼稚園) (Kindergarten Section)	Leimond Koka Kodomoen (Kindergarten Section)
Enrollment Capacity	2-year-olds**	Not accepting applications	10 children	Not accepting applications	Not accepting applications	Not accepting applications	Not accepting applications
	3-year-olds	Around 30 children	30 children	5 children	15 children	Around 30 children	5 children
	4-year-olds	Only a few places remain	Only a few places remain	5 children	2 children	Only a few places remain	Only a few places remain
	5-year-olds	Only a few places remain	Only a few places remain	5 children	10 children	Only a few places remain	5 children
Application Form Distribution		From August 1 (Thu)	Already available	From August 5 (Mon), from 9:00	From August 1 (Thu), from 9:00	From August 1 (Thu)	From September 2 (Mon)
Enrollment Information Session		August 31 (Sat) from 10:00 (Entry from 9:45) - No reservation required	August 24 (Sat) from 10:00 to 11:30 (Registration from 9:30) - A childcare trial is available, so please come with your child. - No reservation required.	August 22 (Thu) from 13:30 to 14:30 (Registration from 13:00) - No reservation required	August 23 (Fri) from 10:30 (Registration from 10:15) - No reservation required	September 13 (Fri) from 15:30 (Registration from 15:00) - No reservation required - If you wish to have your child(ren) cared for (2 years old or older), please contact us at least one week prior to the session.	September 7 (Sat) from 13:00 - Reservation required (by phone)
Application Period		First come first served after the information session	After the information session	After the information session. - If the number of applicants exceeds the enrollment capacity, a lottery will be held at a later date.	August 1 (Thu) from 9:00 First come first served	First come first served after the information session	First come first served after the information session
Inquiries	Location	2100 Sandaiji, Minakuchi-cho	3-21 Joto, Minakuchi-cho	45-1 Akiba, Minakuchi-cho	1015 Bannakayama, Minakuchi-cho	604 Noda, Kounan cho (甲南町)	1601 Nojiri, Kounan cho (甲南町)
	Phone Number	62-8188	62-0329	63-5670	65-2185	86-8088	86-8013
	Operator	Morishima Gakuen	Ohmi Seisho Gakuen	Kikeikai	Kujira	Morishima Gakuen	Remonkai

See the city website for more information.

Detailed information about enrollment applications for private and public nursery schools will be published in the September newsletter.

Koka City Website ▶



**Inquiries** Hoiku Yochien Ka ☎ 69-2180 ☎ 69-2298

# Group Health Checkups and Medical Examinations Starting in September

Reservations  
Required





## 9月からの集団健診(検診)のお知らせ

Taking health checkups and medical examinations regularly are recommended to prevent illnesses. For more information, please refer to the health checkup calendar distributed to each household.

### How to make a reservation

Reservations can be made by telephone or online. (Appointments are not required for bowel cancer screening and specific health checkups).

Please note that phone lines may be busy, so online reservations are recommended.

	Phone Reservations	Online Reservations
<b>Cancer screening: 40 years and over (Cervical cancer screening: 30 years and over)</b>	<b>Reservation number: 0120-994-595</b> Reservation period: August 7 (Wed) - 9 (Fri) Reception hours: 9:00 – 18:00	Reservation period: August 7 (Wed) - 31 (Sat)  Online Reservation Form ▶  <b>24 Hour Access</b>
<b>Basic health checkup: 16-39 years</b>		Reservation period: up until 2 days before the checkup date  Online Reservation Form ▶  <b>24 Hour Access</b>

### Health Checkup/Medical Examination Schedule

Date	Venue	Reception Hours				
		Stomach/Lung Cancer	Bowel Cancer	Breast/Cervical Cancer	Basic Health Checkup	Lifestyle Health Checkup
		9:00 - 9:15 (male) 9:30 - 9:45 (male) 10:00 - 10:15 (female) 10:30 - 10:45 (female)	Container sales/ distribution 9:00 - 11:00	13:30 - 13:45 14:00 - 14:15 14:30 - 14:45	9:00 - 10:45	9:00 - 11:00
September 3 (Tue)	maROOM				● 9:30 - 10:45	
September 10 (Tue)	Koka Hoken Center	●	●	●	●	●
September 13 (Fri)	Tsuyama Kaihatsu Center	●	●	●		●
September 21 (Sat)	Koka City Hall (Annex)	●	●	●		●
September 27 (Fri)	Shigaraki Kaihatsu Center	●	●	●	●	●
October 1 (Tue)	Minakuchi Taiikukan Gym	●	●	●		
October 2 (Wed)		●	●			●
October 29 (Tue)	Kounan (甲南) Kominkan (Shinobi no Sato Plala)			●		
October 30 (Wed)		●	●	●		●
January 17 (Fri)	maROOM				● 9:30 - 10:45	

**Inquiries** (Cancer screening and Basic Health Checkup) Sukoyaka Shien Ka ☎ 69-2168 ☎ 63-4085  
(Lifestyle Health Checkup) Hoken Nenkin Ka ☎ 69-2141 ☎ 63-4618

# Collection Schedule for Sewage from Non-flush Toilets During the Obon Summer Holiday

## お盆休みのし尿くみとり

Below is the collection schedule for sewage from non-flush toilets. If you want to have an urgent collection before the Obon summer holiday, please contact the collection contractor in your area directly.

Contractor	Urgent Request Deadline Before Obon	Obon Summer Holiday	Collection Area		
Minakuchi Tekunos (☎ 0748-62-1959)	August 2 (Fri)	August 10 (Sat) - 14 (Wed)	Minakuchi-cho	Whole area of Minakuchi-cho	
			Shigaraki-cho	Nagano area	Kita Shin-machi, Kitade-cho, Tonya-machi, Tosei-cho, Hiroshiba-cho, Higashi Nihonmaru-cho, Kami Nihonmarucho, Shin Nihonmaru-cho, Minorigaoka-cho, Ogama-cho, Fukushima-cho, Tsuji-machi, Naka-machi, Banba-cho, Hon-machi, Nakade-cho, Moto-machi, Suehiro-cho, Yakiya-cho, Asahi-machi, Hairando-cho, Tsukushigaoka-cho
					Eda, Koyama (神山), Tashiro, Hata, part of Nishi
Nichiei Hino (☎ 0748-53-3941)	August 2 (Fri)	August 10 (Sat) - 14 (Wed)	Tsuchiyama-cho	Ono (大野)Gakku* *School District	
			Koka-cho	Sagami, Ohara Gakku* (except for Ohara Ichiba), Aburahi Gakku, Sayama Gakku,	
			Kounan-cho (甲南町)	Whole area of Konan-cho	
Hirose (☎ 0748-52-0943)	August 2 (Fri)	August 10 (Sat) - 14 (Wed)	Tsuchiyama-cho	Ayukawa Gakku, Yamauchi Gakku, Tsuchiyama Gakku	
			Koka-cho	Sagami, Ohara Ichiba	
			Shigaraki-cho	Nagano area	Atago-machi, Zaimoku-cho, Taisho-machi, Shin-machi, Matsuo-cho, Minami Matsuo-cho, Sakae-machi
					Kumoi Gakku, Obara Gakku (except part of Nishi), Asamiya Gakku, Tarao Gakku

**Inquiries** Seikatsu Kankyo Ka ☎ 69-2145 ☎ 63-4582

## Summer Vacation for City Hall Staff

August 13 (Tue), 14 (Wed), 15 (Thu)

市役所夏季集中休暇

During this period, several staff will take their summer vacation, and departments will be operating with minimal personnel. We request your understanding and cooperation.

**Which Office?** Koka City Hall

Please note that the following departments and branches will operate as usual. Other offices will operate according to their own schedules.

**Inquiries** Jinji Ka ☎ 69-2122 ☎ 63-4086

### Departments Operating as Usual

Koka City Hall	<b>[1st Floor]</b> Shimin Ka, Hoken Nenkin Ka, Seikatsu Kankyo Ka, Shouhi Seikatsu Center, Zeimu Ka, Kaikei Ka, Joge Suido Ryokin Okyaku-sama Center, Chiiki Kyousei Suishin Ka, Seikatsu Shien Ka, Shogai Fukushi Ka, Katei Jido Sodan Shitsu, Choju Fukushi Ka, Sukoyaka Shien Ka
	<b>[2nd Floor]</b> Kosodate Seisaku Ka, Hoiku Yochien Ka
	<b>[Chiiki Shimin Centers]</b> Business will be conducted as usual.



# Don't Throw Trash in Waterways!

水路にゴミを捨てないで!

Oversized trash and general household waste is often dumped into agricultural irrigation canals.

These items obstruct the flow of water and also cause clogging, causing water to overflow and inconvenience residents in the neighborhood.

Also, when mowing grass around waterways, please be careful not to let cut grass fall into the canals. Grass causes clogging of waterways, too.

The area near waterways can be extremely dangerous. The water may also rise quickly during typhoons or sudden heavy rainfall. Please stay away from the canals.



▲Dumped oversized trash

**Inquiries** Noson Seibi Ka ☎ 69-2195 ☎ 63-4592  
Yasugawa Tochi Kairyo Ku ☎ 62-1154 ☎ 63-0674

## In Case of an Emergency, Please Register for the “List of Persons Requiring Assistance for Evacuation”!

「避難行動要支援者同意者名簿」に登録を!

Koka City maintains a “List of Persons Requiring Assistance for Evacuation” to aid the elderly, individuals with disabilities, and those certified as requiring nursing care during disasters. With their consent, this list can be shared with ward and community associations, welfare and child welfare committee members, firefighters, police, and others. It can be used not only during emergencies but also for ongoing support and care.

If you have concerns about evacuation, please register yourself on this list.

### ★How to Register

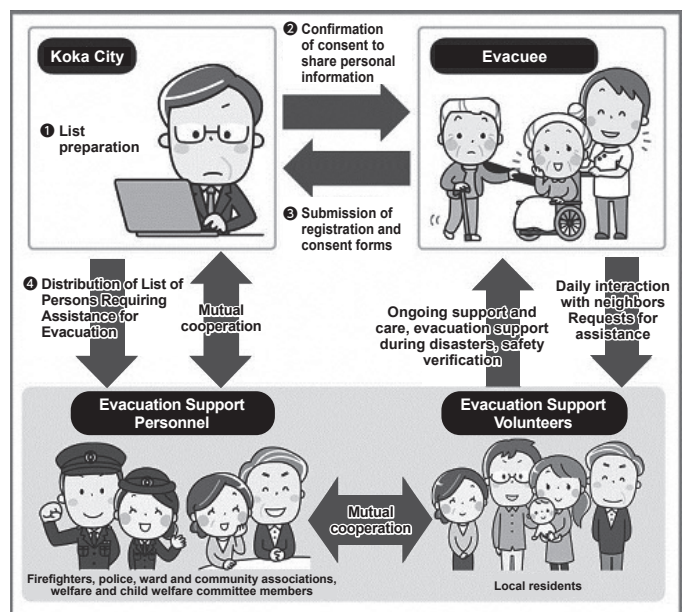
Please fill out and submit the “Personal Information Provision Consent Form” and “Koka City Registration Form for the List of Persons Requiring Assistance for Evacuation” available at the Chiiki Kyosei Shakai Suishin Ka, each Chiiki Shimin Center, or the city website.

Note: In the event of a disaster, those who provide support may also be affected. Your agreement does not guarantee support.



▲Koka City Website

**Inquiries** Chiiki Kyosei Shakai Suishin Ka  
☎ 69-2155 ☎ 63-4085



# Are You Ready for a Typhoon?

台風への備えはできていますか？



Typhoons and heavy rain cause serious disasters every year. Let's review five important points in order to be prepared in case of an emergency.

## ① Check the Level of Danger Around Your Home

### Shiga Disaster Prevention Information Map

You can check the level of risk for different disasters on the map. Identify potential risks around your home so that you can evacuate as soon as possible in the event of a disaster.



More detailed information can be found in the “Koka City Disaster Prevention Map 2022”.



Koka City Disaster Prevention Map



## ② Identify Evacuation Sites

- **Confirm evacuation routes to schools, community centers, and other places designated as evacuation sites.**
- **Speak with family members about evacuation sites and how to contact each other in the event of a disaster.**
- **When evacuating, minimize your belongings (in a backpack, for example), making sure that you can use both hands.**



More information ▶

## ③ Prepare Emergency Supplies

- **Food (for at least 3 days)**  
Bottled water (3L per person per day), instant rice, ready-made pouch foods, dried bread, etc.
- **Daily necessities**  
Flashlight, mobile battery, portable radio, tissues, lighter, blankets, etc.
- **Clothing**  
Jackets, underwear, socks, etc.
- **Valuables**  
Cash, ID card, copy of bankbook, etc.
- **Other**  
Toothbrushes, towels, first-aid supplies, medications for chronic illnesses, regular medicines, etc.



## ④ Be Aware of Alert Levels and Evacuation Timing

**Alert Level 5 (Emergency Safety Measures)** indicates a life-threatening situation in which you can no longer safely evacuate. Move upstairs and/or into the room furthest from any cliffs.

When **Alert Level 4 (Evacuation Order)** is issued, all residents in danger should evacuate immediately.

When **Alert Level 3 (Evacuation of the Elderly and Others)** is issued, elderly people, those with disabilities, and others who need more time to evacuate should begin evacuating.

Alert Level (Evacuation Information)			
Alert Level	Conditions	What to Do	Evacuation Information Issued by Koka City
5	Disaster has occurred or is imminent	Take immediate measures to protect your life!	Emergency Safety Measures
Evacuate as soon as or before Alert Level 4 is issued!			
4	High risk of disaster	Everyone evacuate	Evacuation Order
3	Risk of disaster	Elderly people evacuate	Evacuation of the elderly and others
2	Weather worsening	Review how to evacuate	—
1	Risk of weather worsening	Prepare for disaster	—

## ⑤ Gather Information

Obtain accurate disaster information quickly and **take early action to evacuate.**

### Meteorological Agency “KIKIKURU”

The danger level of disasters caused by rain, typhoons, and other windstorms can be checked on a map in real time.



### Aikoka Emergency e-mails

Koka City provides an e-mail service to distribute weather and evacuation information to residents.





**Inquiries** Kikikanri Ka ☎ 69-2103 ☎ 63-4619

# Consultation Corner

August 15 to September 14

Consultation services are provided for free. Feel free to use them.

Consultation Topic/Contact Details	When	Available Times	Where/ Other Information
<b>Daily Life and Work Consultations (Life Support Desk)*</b> Concerns about daily life, work, etc. *No application required. Support provided by: General support staff or employment support staff. <b>Contact</b> Seikatsu Shien Ka ☎ 69-2158 ☎ 63-4085	Monday to Friday (except national holidays)	8:30-17:15	Seikatsu Shien Ka 1st Floor, Koka City Hall
<b>Consumer Affairs Consultations</b> Advice about contracts, products, etc. in consumer affairs. Support provided by: Consumer Affairs Consultant <b>Contact</b> Shouhi Seikatsu Center ☎ 69-2147 / Consumer Hotline 188 (no area code)	Monday to Friday (except national holidays)	9:00-17:00	Shohi Seikatsu Center 1st Floor, Koka City Hall
<b>Pension Consultations</b> Support provided by: Kusatsu Japan Pension Service employees *Reservations required. Appointments filled on a first-come, first-served basis. <b>Contact</b> <b>Appointments</b> Kusatsu Japan Pension Service ☎ 077-567-2220 ☎ 077-562-9638	September 12 (Thu) *Held every other month	10:00-15:00	Kaigishitsu Room 201 2nd Floor, Koka City Hall
<b>School Age Consultations</b> For school-aged children (from elementary school to high school age), their parents, and their families. <b>Contact</b> Kosodate Seisaku Ka ☎ 69-2176 ☎ 69-2298	Every Monday, Wednesday and Friday (except for national holidays)	8:30-17:15	Kosodate Seisaku Ka 2nd Floor, Koka City Hall You can also make inquiries using the Child-Rearing Concierge Inquiry Form.
<b>Young Carers Consultations</b> For young carers, the community and other involved persons regarding concerns and issues faced. <b>Contact</b> Kosodate Seisaku Ka ☎ 69-2184 ☎ 69-2298			
<b>Child Development and Learning Consultations*</b> For development and mental health issues. *Reservations by phone or fax are required. <b>Age range</b> Toddlers around 4 years old and up, elementary, junior high, high school students and young adults up to around 25 years old *For consultation for children under 4 years old, please contact your local health center. <b>Contact</b> <b>Appointments</b> Hattatsu Shien Ka ☎ 69-2178 ☎ 69-2298 (Reception hours: 9:00-17:00)			Preschools, schools, city halls, etc.
<b>Youth Consultations for Truancy or Social Withdrawal</b> Counseling on social withdrawal and truancy for those who have completed compulsory education up to the age of 25 years old <b>Contact</b> Hattatsu Shien Ka ☎ 69-2179 (☎ Reception hours: 9:00-17:00)			
<b>General Youth Issues*</b> Counseling regarding truancy, bullying, delinquency, delinquent behavior, friendships, employment and school enrollment, etc. *From Monday to Friday, 9:00 am to 4:00 pm (except public holidays and end-of-year holidays). Consultations can also be made by phone and email.		<b>Contact</b> Shonen Center (in Minakuru Plaza) ☎ 62-6010 ☎ 63-3977 ✉ k-syonen@city.koka.lg.jp	



## August Tax Payments

### The due date for tax payments this month is: September 2 (Mon)

- Resident tax (2nd term installment)
- National health insurance tax (3rd term installment)
- User fees (Nursery school, nursery school lunch fees)
- Long-term care insurance premium (3rd term installment)
- Water rates
- Medical insurance premiums for the elderly

**Direct debit is a convenient way to manage payments.**



### Emergency Dental Care during the Obon Summer Holiday

お盆に急患歯科診療を実施しています

Dental clinics affiliated with the Koka Konan Dental Association provide emergency dental care on holidays in case of sudden dental problems.

Please contact each dental clinic directly for clinic hours.

● **August 14 (Wed)**, Konan Yamamoto Shika\*  
(Bodaiji, Konan city) \*Shika: dental clinic  
☎ 74-1584

● **August 15 (Thu)**, KENGO DENTAL CLINIC  
(Minakuchi-cho)  
☎ 62-2222

● **August 16 (Fri)**, MATSUDA DENTAL OFFICE  
(Minakuchi-cho)  
☎ 63-0632

**Inquiries** Iryo Seisaku Shitsu  
☎ 69-2171 ☎ 63-4085



Koka City Website▲



### Minakuchi Clinic Offers Medical Services on holidays

**Open on** August 4th, 11th, 12th, 18st, 25th

#### Business Hours

- Morning session: 9:00 am - 12:30 pm
  - Afternoon session: 1:30 pm - 4:00 pm
- Reception: 8:45 am - 3:30 pm

**Medical Specialty** Internal Medicine

**Administrator** Medical Koka

**Inquiries** Minakuchi Shinryosho Clinic  
(during business hours)  
☎ 62-3346 ☎ 63-1728  
Iryo Seisaku Shitsu  
☎ 69-2171 ☎ 63-4085



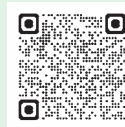
### Extended Business Hours in August (until 19:00 every Tuesday)

## August 6, 13, 20, 27

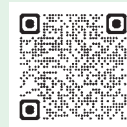
On Tuesdays, the Shimin Ka in City Hall is open until 19:00 for issuing personal documents such as family registers, residence certificates, tax certificates and for registering personal seals.

\*Please note that we cannot handle procedures related to the My Number Card or resident transfers (moving in, moving out, etc.).

Various personal documents can be obtained at convenience stores and online using your My Number Card. (For details, please scan the QR code below)



▲ Issuance at  
Convenience Stores



▲ Online Issuance

**Inquiries** Shimin Ka ☎ 69-2138 ☎ 65-6338



### Japanese Language Class "Niji"

日本語教室「虹」

If you want to join a Japanese language class between September and December, please make a reservation for a class allocation interview.

**When** From 14:00 on August 26 (Mon)

**Fee** ¥2,000

**Where** maROOM

Note: Contact us for a class allocation interview on a different day of the week.

**Inquiries Application** Koka International Society

☎ 63-8728 ☎ 70-6468

✉ mifa@mx.ne.jp

## Editing & Publishing

### Koka City Hall

6053, Minakuchi, Minakuchi cho, Koka city, 528-8502

☎ 0748-65-0650 ☎ 0748-63-4086

Business Hours: 8:30-17:15 (Except extended business hours on Tuesdays)



Information on Koka City is also available on  
the city's website and Facebook!

#### Koka City Website

<https://www.city.koka.lg.jp/>

#### Koka City Facebook

<https://www.facebook.com/city.koka>

Koka City  
Website



Koka City  
Facebook

