



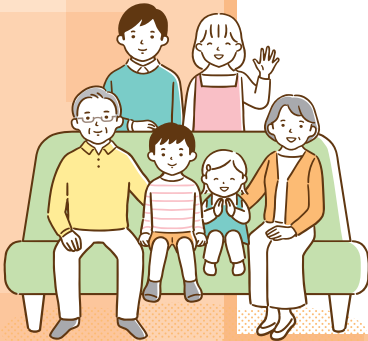
Special Feature

Understanding Dementia



~ Living Life Your Way at Any Age ~

認知症を知る



~ September is Dementia Awareness Month ~

Dementia is a condition in which brain functions deteriorate for a variety of reasons.

“What if my parents, someone close to me, or even myself were to suffer from dementia?”

Have you ever had such concerns?

In this special feature, we introduce local efforts to support people with dementia and their families.

Let's start with a proper understanding of dementia and its prevalence in our daily lives.

●Inquiries: Choju Fukushi Ka (Tel) 69-2175 (Fax) 63-4591

Dementia, a Common Disease

Dementia is a common disease that accompanies the aging process. Anyone can develop symptoms as they get older. Currently, one in four people over 65 years old is said to have dementia, including those with mild cognitive impairment, which is said to be a preliminary stage of dementia.

The number of people with dementia, including mild cognitive impairment

One in four people over the age of 65



Koka City, Facing an Aging Society

In Koka City, the percentage of the population aged 65 or older was 29.4% as of the end of June 2024. As the city's rapidly aging population increases, dementia will become a bigger part of our daily lives. It is often thought that people will not be able to cope once they have dementia, but it is possible for people to live their lives as they wish.

Try to imagine

What Would Life Be Like with Dementia?

If I have dementia...

Can I live life as before?

Could I still take out the garbage or use the gas stove by myself...

I'm worried about getting into financial trouble...



With a little effort, you can maintain your daily routine

By taking steps such as leaving yourself notes or using alarms, you can continue to live life as usual.



Will I have to go into a nursing home?

I don't want to bother my family...

I don't want to leave my home...



You can live on your own terms at home

There are ways to continue living at home while receiving support from the people around you and utilizing public services.



Will I lose the ability to communicate?

I'm worried whether I'll be able to express my thoughts and feelings...

Perhaps I won't be able to hold a conversation...



You will not lose the ability to perform daily tasks immediately

Social interaction, such as going out with family and friends and communicating with them, is believed to slow the progression of dementia.



Regarding Dementia and Elderly Care

Please Contact

Your Local Chiiki Hokatsu Support Center*

*chiiki hokatsu support center: community comprehensive support center

"I have been forgetting things lately..." "My family member is acting strangely..."

If you have any concerns about dementia or elderly care, please consult your local chiiki hokatsu support center. Medical and nursing care specialists are available to listen to your concerns.

Minakuchi Area Tel 65-1170

Tsuchiyama Area Tel 66-1610

Koka Area Tel 88-8136

Kounan Area (甲南) Tel 86-8034

Shigaraki Area Tel 82-3180



KOKA EXPO 2024

「コウカEXPO2024」を開催します



Koka EXPO 2024 will take place on Sunday, September 29, from 9:30 a.m. at the Koka City Machizukuri Katsudo Center “maRoom” and other public facilities in the area.

The expo will feature a variety of events, including a “World Expo Promotion Event” to display local initiatives and future technologies for the upcoming Osaka-Kansai Expo, the “Koka Craft Festa” where visitors can experience and become more familiar with the city’s local industries, and the “Koka Shoko Matsuri Festival” where local businesses will provide visitors with opportunities to have fun and learn.

We will be offering wonderful giveaways exclusively for visitors, so please come and join us. We look forward to seeing you at the event!

Free Admission

The Expo Will Be Held Rain or Shine

- Some programs require advance reservations. Please check the city website for details.
- Parking is limited, so please use the shuttle bus (to/from Minakuchi Sports-no-mori) or public transportation whenever possible.
- A ceremony to commemorate the 20th anniversary of Koka City's establishment will be held on the morning of the same day at Aikouka Shimin Hall.

Periodic Vaccination for New Coronavirus Infections for the Elderly to be Conducted Starting October



高齢者対象新型コロナウイルス感染症の定期接種を10月以降に実施

The vaccination for new coronavirus infection is intended to prevent serious illness. Coronavirus is classified as a Class B disease under the Preventive Vaccination Law. Periodic vaccinations under this law will begin in October.

Eligible Persons Those who are registered residents of Koka City and meet either of the following conditions,

(1) or (2)

(1) Those who are 65 years old or older on the day of vaccination

(2) Those who are between 60 and 65 years old on the day of vaccination and who qualify for Level 1 of the Physical Disability Certificate due to a functional disability of the heart, kidney, or breathing organs, or an immunological dysfunction caused by the human immunodeficiency virus.

Co-payments for Vaccination ¥2,000

*Recipients of public assistance or households exempt from 2024 municipal tax are exempt from paying copayments (**prior application required**).

*Those who are not eligible for regular vaccinations will be offered “optional vaccinations” and must pay the full amount of the cost on their own. Please inquire at each medical institution for fees and other details.

How to get a Vaccination Individual vaccination at medical institutions

The Corona vaccination can be given at the same time as the influenza vaccination if the vaccination doctor deems it necessary.

Please refer to the October issue of the public newsletter Koho Koka for details including medical institutions offering the vaccination and application for exemption.

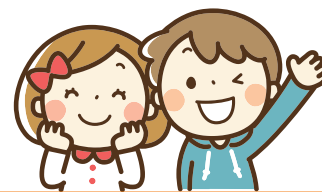
Inquiries Sukoyaka Shien Ka ☎ 69-2167 ☎ 63-4085

Koka City Website ▶



The Child Allowance System Will Change from October

10月から児童手当の制度が変わります



1. Income limits will be eliminated.
2. The allowance will be extended to high school age children.
3. The allowance for the third and subsequent children will increase to 30,000 yen per month.
4. If you are raising a college student (after the end of the first March of his/her 18th year to the end of the first March of his/her 22nd year), you are eligible for inclusion in the additional multiple-child allowance calculation.

Age Group	Allowance Amount (For the First and Second Children)	Allowance Amount (For the Third and Subsequent Children)
Under 3 Years Old	¥15,000	¥30,000
3 Years Old to 18 Years Old	¥10,000	¥30,000
College Student (18 to 22 years old)	¥0 Eligible for inclusion in the additional multiple-child allowance calculation.	

5. Payment will be made six times a year (even-numbered months).
6. Payment notices will no longer be sent.

The Following Persons are Required to Apply

Eligible Persons

- Those who are not raising a child of junior high school age or younger, but are raising a child of high school age
- Those who were not eligible for special benefits before the revision due to exceeding the income limit.
- Those who are receiving child allowance/special benefits for children up to high school age and are also raising a college student and are raising three or more children in total.

Application Period

Until September 30 (Mon)

How to Apply

- In person at Kosodate Seisaku Ka, each Chiiki Shimin Center (Weekdays)
- Online application (My number card and a smart phone with NFC support are required)
- By post

Note: Public employees should complete the procedure at their workplace.

Inquiries Kosodate Seisaku Ka ☎ 69-2176 ☎ 69-2298

Koka City Website ▶



Application for Admission to Nursery Schools, Certified Childcare Centers, Small-scale Day Care Centers, and Home-based Day Care Centers for 2024

令和7年度 保育園・認定こども園・小規模保育事業所・家庭的保育事業所の入園申込受付

Acceptance of application for admissions will start soon. Please visit the Koka City website for details.

*nursery schools: hoikuen

*certified childcare centers: nintei kodomoen

*small-scale day care centers: shokibo hoiku jigyosyo

*home-based day care centers: kateiteki hoiku jigyosho

Public and Private Nursery Schools, Certified Childcare Centers, (full-time Nursery section, Certified Category 2 and 3), Small-scale Day Care Centers, and Home-based Day Care Centers

Application Period October 1 (Tue) – 11 (Fri)

How to Apply Online Application

Koka City Website ▶



Document Distribution From September 2 (Mon)

Where to Obtain the Documents City website, each child care facility, each Chiiki Shimin Center, each Kosodate Shien Center

- Please Note**
- Both current students and students with an informal offer, and children on a waiting list are required to submit an application.
 - If you wish to enroll your child in the middle of the school year 2025, please apply during this period.
 - You may also apply for admission to a child care facility before the birth of your baby.
 - Some documents may take time to complete, so please allow plenty of time to have them ready.

Public Certified Childcare Center (Part-time Kindergarten Section, Certified Category 1)

Application Period September 9 (Mon) to 11 (Wed), 8:30 – 17:15

Note: If you are unable to apply during the application period, you can apply at Hoiku Yochien Ka on September 12 (Thu) and 13 (Fri)

Koka City Website ▶



How and Where to Apply Please submit the required documents to your preferred childcare center. Online application is not available.

Document Distribution From September 2 (Mon)

Where to Obtain the Documents City website, each child care facility, each Chiiki Shimin Center, each Kosodate Shien Center

- Note**
- For current students, please submit a “zaizen gansho (request to continue enrollment)” to the child care center attended.
 - If there are too many applications, a lottery will be held.
 - For inquiries about private childcare centers, please contact each school directly.

Please note that you cannot apply to both public certified childcare centers (Part-time kindergarten section, certified category 1) and other childcare facilities such as nursery schools at the same time.

Inquiries Hoiku Yochien Ka ☎ 69-2180 📠 69-2298

Start of Applications for After-school Children's Clubs* for the 2025 School Year

* After-school Children's Clubs: Jido Clubs

令和7年度 児童クラブ利用申込み受付開始

After-school activities are available for children whose parents are unable to care for them at home during the daytime due to work or other reasons.

Those who wish to enroll their children from April 2025 should apply by phone during the application period.

-Admission will be offered to those who meet the admission criteria and have a high need for childcare.

-For more information, please contact each children's club directly.

Eligible Children Elementary school students (Grades 1-6)

Available Hours Weekdays: After school until 18:30
Saturday: 8:00 - 18:30 (If 5 or more students apply, we will consider offering this service.)
Long vacations: 8:00 - 18:30

Basic Fee 10,000 yen per month (Additional fees will be charged for participation on Saturdays and during long vacations.)

Koka City Website ▶



Application Period October 1 (Tue) to 11 (Fri)

Management Category	Name of Club	School District	Managed by	Telephone Number
Publicly owned, privately operated	Minakuchi Jido Club	Minakuchi	Waku Waku Kids Office (NPO) ☎ 63-4655	☎ 70-3164
	Ayano Jido Club	Ayano		☎ 70-2290
	Kibukawa Jido Club	Kibukawa		☎ 70-2369
	Bantani Jido Club	Bantani		☎ 70-6410
	Bantani Higashi Jido Club	Bantani-higashi		☎ 62-1881
	Kashiwagi Jido Club	Kashiwagi		☎ 63-0960
	Tsuchiyama Kashikiya Jido Club	Tsuchiyama		☎ 66-0872
	Ono (大野) Jido Club	Ono (大野)		☎ 67-0302
	Aburahi Jido Club	Aburahi	Abrahi Jido Club Hogosha Kai (Parents' Association)	☎ 88-2384
	Ohara Jido Club	Ohara	Rokyo Center Jigyodan (Worker's Cooperation Center) Koka Office ☎ 080-6160-1286	☎ 88-2368
	Sayama Jido Club	Sayama		☎ 70-2249
	Kounan (甲南) Somakko Jido Club	Kounan (甲南)-daiichi		☎ 70-2329
	Kounan (甲南) Wakuwaku Jido Club	Kibogaoka		☎ 86-4024
	Kounan (甲南) Nakayoshi Jido Club	Kounan (甲南)-chubu, Kounan (甲南)-daini, Kounan (甲南)-daisan		☎ 86-1577
	Kohara Tsubasa Jido Club	Kohara		☎ 82-4511
	Kumoi Kumokko Jido Club	Kumoi		☎ 83-0311
	Shigaraki Jido Club	Shigaraki		☎ 82-2010
Privately owned, privately operated	Hokago Sanma Club	All school districts in the Minakuchi area	Sanma Club (NPO) ☎ 76-3414	☎ 76-3414
	Mori no Nakayoshi Jido Club	Kounan (甲南)-daini	Rokyo Center Jigyodan (Worker's Cooperation Center) Koka Office ☎ 080-6160-1286	☎ 70-2664



The designated management period for publicly and privately operated children's clubs will expire at the end of FY2024. We are in the process of selecting operators from FY2025 onward and this may result in changes to the current options.

Inquiries Kosodate Seisaku Ka ☎ 69-2176 ☎ 69-2298

Consultation Corner

September 15 to October 14

Consultation services are provided for free. Feel free to use them.

Consultation Topic/Contact Details	When	Available Times	Where/ Other Information
Daily Life and Work Consultations (Life Support Desk)* Concerns about daily life, work, etc. *No application required. Support provided by: General support staff or employment support staff. Contact Seikatsu Shien Ka ☎ 69-2158 ☎ 63-4085	Monday to Friday (except national holidays)	8:30-17:15	Seikatsu Shien Ka 1st Floor, Koka City Hall
Consumer Affairs Consultations Advice about contracts, products, etc. in consumer affairs. Support provided by: Consumer Affairs Consultant Contact Shouhi Seikatsu Center ☎ 69-2147 / Consumer Hotline 188 (no area code)	Monday to Friday (except national holidays)	9:00-17:00	Shohi Seikatsu Center 1st Floor, Koka City Hall
Pension Consultations Support provided by: Kusatsu Japan Pension Service employees *Reservations required. Appointments filled on a first-come, first-served basis. Contact Appointments Kusatsu Japan Pension Service ☎ 077-567-2220 ☎ 077-562-9638	November 14 (Thu) *Held every other month	10:00-15:00	Kaigishitsu Room 201 2nd Floor, Koka City Hall
School Age Consultations For school-aged children (from elementary school to high school age), their parents, and their families. Contact Kosodate Seisaku Ka ☎ 69-2176 ☎ 69-2298	Every Monday, Wednesday and Friday (except for national holidays)	8:30-17:15	Kosodate Seisaku Ka 2nd Floor, Koka City Hall You can also make inquiries using the Child-Rearing Concierge Inquiry Form.
Young Carers Consultations For young carers, the community and other involved persons regarding concerns and issues faced. Contact Kosodate Seisaku Ka ☎ 69-2184 ☎ 69-2298			
Child Development and Learning Consultations* For development and mental health issues. *Reservations by phone or fax are required. Age range Toddlers around 4 years old and up, elementary, junior high, high school students and young adults up to around 25 years old *For consultation for children under 4 years old, please contact your local health center. Contact Appointments Hattatsu Shien Ka ☎ 69-2178 ☎ 69-2298 (Reception hours: 9:00-17:00)			Preschools, schools, city halls, etc.
Youth Consultations for Truancy or Social Withdrawal Counseling on social withdrawal and truancy for those who have completed compulsory education up to the age of 25 years old Contact Hattatsu Shien Ka ☎ 69-2179 ☎ Reception hours: 9:00-17:00			
General Youth Issues* Counseling regarding truancy, bullying, delinquency, delinquent behavior, friendships, employment and school enrollment, etc. *From Monday to Friday, 9:00 am to 4:00 pm (except public holidays and end-of-year holidays). Consultations can also be made by phone and email.		Contact Shonen Center (in Minakuru Plaza) ☎ 62-6010 ☎ 63-3977 ✉ k-syonen@city.koka.lg.jp	

September Tax Payments

**The due date for tax payments
this month is: September 30 (Mon)**

- National health insurance tax (4th term installment)
- User fees (Nursery school, kindergarten fees and nursery school lunch fees)
- Long-term care insurance premium (4th term installment)
- Public sewage fees and agricultural community drainage facility fees

Direct debit is a convenient way to manage payments.



Minakuchi Shinryosho Clinic Offers Medical Services on Sundays and National Holidays
みなくち診療所で休日に診療を行っています。

Open on September 1st, 8th, 15th, 16th, 22nd, 23rd, 29th

Business Hours

- Morning session: 9:00 am - 12:30 pm
- Afternoon session: 1:30 pm - 4:00 pm

Reception: 8:45 am - 3:30 pm

Medical Specialty Internal Medicine

Administrator

Medical Koka (name changed from Imamura Iin Clinic)

Inquiries Minakuchi Shinryosho Clinic

(during business hours)

☎ 62-3346 ☎ 63-1728

Iryo Seisaku Shitsu

☎ 69-2171 ☎ 63-4085



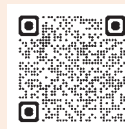
**Extended Business Hours
in September**
(until 19:00 every Tuesday)

September 3, 10, 17, 24

On Tuesdays, the Shimin Ka in City Hall is open until 19:00 for issuing personal documents such as family registers, residence certificates, tax certificates and for registering personal seals.

*Please note that we cannot handle procedures related to the My Number Card or resident transfers (moving in, moving out, etc.).

Various personal documents can be obtained at convenience stores and online using your My Number Card. (For details, please scan the QR code below)



▲ Issuance at
Convenience Stores



▲ Online Issuance

Inquiries Shimin Ka ☎ 69-2138 ☎ 65-6338



**~A Step Forward to Save Lives~
September 10-16 is "Suicide Prevention Week"**
9月10日~16日は、「自殺予防週間」

Don't miss the signs of mental and physical health problems

When you are working hard at something, you are less likely to be aware of your own stress. It is important to know your own stress signs.

Koka City has posted the "Kokoro no Taionkei" on the city's website. Please take advantage of this system to check your stress and depression levels.

Inquiries Sukoyaka Shien Ka

☎ 69-2168 ☎ 63-4085



In Person Consultations▲



Kokoro no Taionkei▲

Editing & Publishing

Koka City Hall

6053, Minakuchi, Minakuchi cho, Koka city, 528-8502

☎ 0748-65-0650 ☎ 0748-63-4086

Business Hours: 8:30-17:15 (Except extended business hours on Tuesdays)



**Information on Koka City is also available on
the city's website and Facebook!**

Koka City Website

<https://www.city.koka.lg.jp/>

Koka City Facebook

<https://www.facebook.com/city.koka>

Koka City
Website



Koka City
Facebook

