



## Ongoing Support from Pregnancy Through to Child-rearing

Koka City Children and Family Support Center  
"Koka Kodomo Katei Center" Now Open!

甲賀市こども家庭センターを開設しました

## What is Kodomo Katei Center?

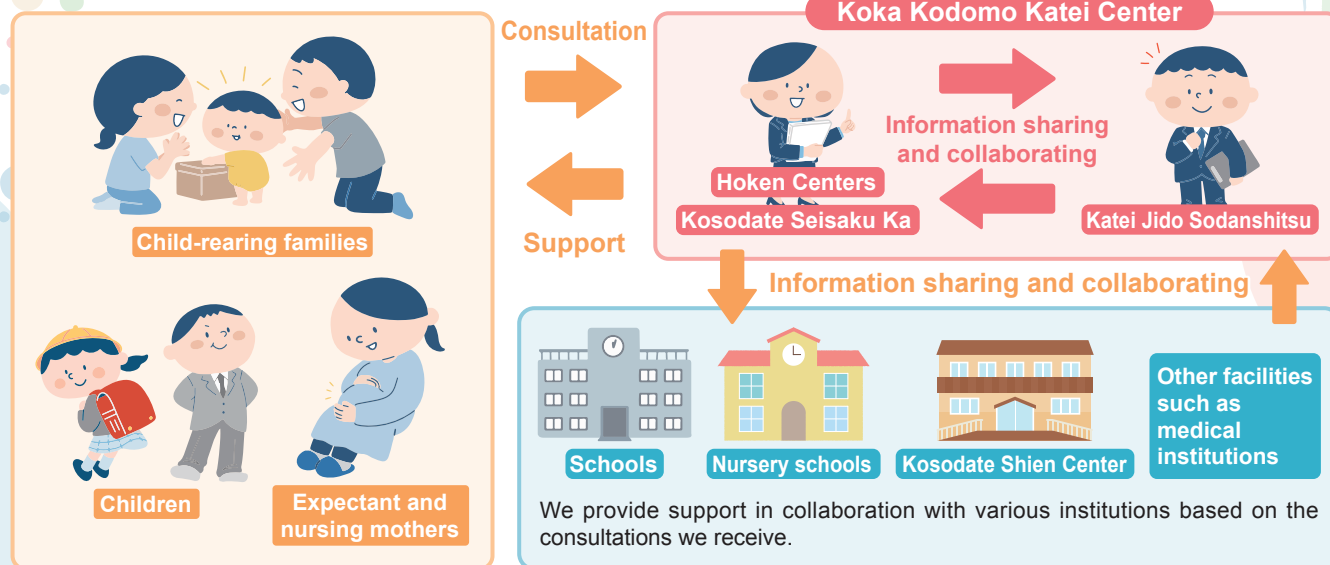
The Kodomo Katei Center (Children and Family Support Center) is a new organization that provides continuous support for all children, their families and expectant and nursing mothers. It includes the Kosodate Seisaku Ka, the Katei Jido Sodanshitsu (Child and Family Consultation Section) and five Hoken Centers (Health Service Centers) across the city. These groups work together and collaborate with other departments to strengthen support services.

## Where is it?

The Kodomo Katei Center is located within the Kodomo Seisaku Ka on the second floor of Koka City Hall.

## Can I still get advice at places like nursery schools?

The consultation locations will remain the same as before. You can still ask for advice at the Kosodate Shien Center (Child-rearing Support Center) and nursery schools.



## Main Consultation Locations

## Consultation on Pregnancy, Childbirth and Childcare

- |  |   |
|--|---|
| ● Minakuchi Hoken Center ☎ 0748-62-5336  | ● Kounan (甲南) Hoken Center ☎ 0748-86-5934 |
| ● Tsuchiyama Hoken Center ☎ 0748-66-1105 | ● Shigaraki Hoken Center ☎ 0748-82-3113   |
| ● Koka Hoken Center ☎ 0748-88-6556       |   |

## Consultations on child-rearing, children's worries, and issues related to child abuse.

- Katei Jido Sodanshitsu ☎ 0748-69-2177

Don't struggle alone - feel free to reach out to us anytime.

## Inquiries

Koka Kodomo Katei Center

Kosodate Seisaku Ka ☎ 0748-69-2169 (2nd Floor, City Hall)

Katei Jido Sodan Shitsu ☎ 0748-69-2177 (2nd Floor, City Hall)

Hoken Centers (Minakuchi/Tsuchiyama/Koka/ Kounan/Shigaraki)

# Save on Certificate Issuance Fees! Personal Documents Can Be Obtained at Convenience Stores Using a My Number Card!

マイナンバーカードを活用して証明書を取得しよう!

**Inquiries** Shimin Ka ☎ 0748-69-2138 ☎ 0748-65-6338



The City Hall counter will be very crowded in April. With your My Number Card, you can obtain some personal documents such as a copy of your resident certificate online or at convenience stores. Please take advantage of this service.



## Document Issuance at Convenience Stores

Obtaining documents at multi-copy machines in convenience stores is simple, and costs ¥100 less than at the City Hall counter.

**Usage Time** 6:30 – 23:00

Please see the Koka City website for details about which documents you can obtain.

City website



Online applications and the document issuance service at convenience stores may be unavailable on certain days due to year-end and New Year holidays or periodic maintenance. Maintenance dates will be announced through the city's official LINE account, so please register to stay informed.



Koka City official  
LINE account



## Online Application

With a smartphone, you can apply for a certificate 24 hours a day, 365 days a year, and you can obtain the certificate by post without having to go to the counter.

### How to Pay

- Credit card
- PayPay app

### What to Prepare

- Smartphone (NFC smartphone capable of scanning My Number Card)
- My Number Card (a valid electronic certificate must be installed)
- 6-digit password for the digital signature certificate
- 4-digit password for the digital certificate for user verification
- Credit card or PayPay app

Please check the city website for more information such as document types and how to apply.

City website



## Yearly Health Checkup Calendar Available

「健診(検診)カレンダー」を発行しました

### Inquiries

Sukoyaka Shien Ka

☎ 0748-69-2168 ☎ 0748-63-4085

City website



Every year, the city publishes a health examination calendar that lists all the health-related events scheduled over the course of the year.

The 2025 calendar will be distributed through wards and neighborhood associations, and will also be accessible on the city website. Additionally, it will be available at certain public facilities. For a list of these locations, please check the city website.



# Please Cooperate in the Separation of Products Containing Mercury.

水銀入りの製品の分別にご協力ください

## Inquiries

Seikatsu Kankyo Ka

☎ 0748-69-2145

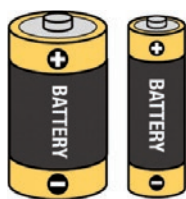
Fax 0748-63-4582

To prevent health risks and environmental harm caused by mercury, the Minamata Convention on Mercury was adopted. Proper disposal is now required for products that contain mercury. The Eisei Center (Sanitation Center) waste processing facility **cannot process products that contain mercury.** Please do not put them in burnable waste. For businesses, mercury-containing products must be disposed of as industrial waste.

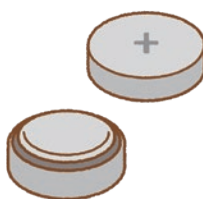
## ! Examples of Products Containing Mercury



Fluorescent lights



Dry cell batteries



Button batteries



Mercury thermometers



Mercury blood pressure monitors

When disposing of these items, please bring them to the Seikatsu Kankyo Ka counter.

## Fires Caused by Lithium-Ion Batteries in Burnable Waste

Lithium-ion batteries, found in mobile battery packs and heated tobacco products, can overheat and catch fire if too much force is applied. These batteries have been causing fires in garbage trucks and waste facilities across the country.



### What is the correct way to dispose of them?

Please do not throw away lithium-ion batteries with household waste. Instead, take them to a large-scale electrical appliance retailer that collects them for recycling.

## Living Information Handbook 2025 is Available!

暮らしの便利帳2025発行しました!

**Inquiries** Hisho Koho Ka ☎ 0748-69-2101 Fax 0748-63-4619

The city has published the latest edition of the Living Information Handbook 2025 (Kurashi No Benricho 2025), which provides an overview of the city and information on welfare, healthcare and daily life services.

It will be hand-delivered to all households, with distribution expected to be completed by Wednesday, April 30.

You can also view the handbook on the city's website.





City website



# Consultation Corner

April 15 to May 14

Consultation services are provided for free. Feel free to use them.

Consultation Topic/Contact Details	When	Available Times	Where/ Other Information
<b>Daily Life and Work Consultations (Life Support Desk)*</b> Concerns about daily life, work, etc. *No application required. Support provided by: General support staff or employment support staff. <b>Contact</b> Seikatsu Shien Ka ☎ 0748-69-2158 ☎ 0748-63-4085	Monday to Friday (except national holidays)	8:30-17:15	Seikatsu Shien Ka 1st Floor, Koka City Hall
<b>Consumer Affairs Consultations</b> Advice about contracts, products, etc. in consumer affairs. Support provided by: Consumer Affairs Consultant <b>Contact</b> Shouhi Seikatsu Center ☎ 0748-69-2147 / Consumer Hotline 188 (no area code)	Monday to Friday (except national holidays)	9:00-17:00	Shohi Seikatsu Center 1st Floor, Koka City Hall
<b>Pension Consultations</b> Support provided by: Kusatsu Japan Pension Service employees *Reservations required. Appointments filled on a first-come, first-served basis. <b>Contact</b> <b>Appointments</b> Kusatsu Japan Pension Service ☎ 077-567-2220 ☎ 077-562-9638	May 8 (Thu) *Held every other month	10:00-15:00	Kaigishitsu Room 204 2nd Floor, Koka City Hall Annex
<b>School Age Consultations</b> For school-aged children (from elementary school to high school age), their parents, and their families. <b>Contact</b> Kosodate Seisaku Ka ☎ 0748-69-2176 ☎ 0748-69-2298	Every Monday, Wednesday and Friday (except for national holidays)	8:30-17:15	Kosodate Seisaku Ka 2nd Floor, Koka City Hall You can also make inquiries using the Child-Rearing Concierge Inquiry Form.
<b>Young Carers Consultations</b> For young carers, the community and other involved persons regarding concerns and issues faced. <b>Contact</b> Kosodate Seisaku Ka ☎ 0748-69-2184 ☎ 0748-69-2298			
<b>Child Development and Learning Consultations*</b> For development and mental health issues. *Reservations by phone or fax are required. <b>Age range</b> Toddlers around 4 years old and up, elementary, junior high, high school students and young adults up to around 25 years old *For consultation for children under 4 years old, please contact your local health center. <b>Contact</b> <b>Appointments</b> Hattatsu Shien Ka ☎ 0748-69-2178 ☎ 0748-69-2298 (Reception hours: 9:00-17:00)			Preschools, schools, city halls, etc.
<b>Youth Consultations for Truancy or Social Withdrawal</b> Counseling on social withdrawal and truancy for those who have completed compulsory education up to the age of 25 years old <b>Contact</b> Hattatsu Shien Ka ☎ 0748-69-2179 (☎ Reception hours: 9:00-17:00)			
<b>General Youth Issues*</b> Counseling regarding truancy, bullying, delinquency, delinquent behavior, friendships, employment and school enrollment, etc. *From Monday to Friday, 9:00 am to 4:00 pm (except public holidays and end-of-year holidays). Consultations can also be made by phone and email.		<b>Contact</b> Shonen Center (in Minakuru Plaza) ☎ 0748-62-6010 ☎ 0748-63-3977 ✉ k-syonen@city.koka.lg.jp	



## Monthly Tax Payments

今月の納税

**The due date for tax payments this month is: April 30 (Wed)**

- User fees (Nursery school, kindergarten fees and nursery school lunch fees)
- Water rates

**Direct debit is a convenient way to manage payments.**



Notice

### Minakuchi Shinryosho Clinic Offers Medical Services on Sundays and National Holidays

みなくち診療所で休日に診療を行っています

**Open on** April 6, 13, 20, 27, 29(Sundays and National holidays)

**Business Hours** ● Morning session: 9:00 am - 12:30 pm  
● Afternoon session: 1:30 pm - 4:00 pm  
Reception: 8:45 am - 3:30 pm

**Medical Specialty** Internal Medicine

**Administrator**

Medical Koka (name changed from Imamura Iin Clinic)

**Inquiries** Minakuchi Shinryosho Clinic (during business hours)

☎ 0748-62-3346 ☎ 0748-63-1728

Sukoyaka Shien Ka

☎ 0748-69-2171 ☎ 0748-63-4085

website ▶



Apply

### Japanese Language Class for Beginners "Hajimete no Nihongo"

はじめてのにほんご

You can learn basic Japanese, including greetings, daily conversation, Hiragana, and Katakana, at a pace that suits your schedule.

**When** 9:00 - 12:00 on Sundays, starting on April 20  
(10 lessons of 3 hours each)

**Where** Tabunka Kyosei Center

1-20, Honmaru, Minakuchi-cho, Koka City

**Eligible Persons** Those who live or work in Koka City and are learning Japanese for the first time

**Fee** ¥3,000 (textbook fee)

**Application Deadline** April 10 (Thu)

**How to Apply** You can apply using an online form, by phone, or in person at the counter.

\*After applying, your Japanese level will be checked.

**Inquiries Application**

Koka International Society ☎ 0748-63-8728

Online application form ▶



## Extended Business Hours in April

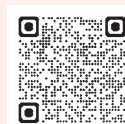
(until 19:00 every Tuesday)

**April 1, 8, 15, 22**

On Tuesdays, the Shimin Ka in City Hall is open until 19:00 for issuing personal documents such as family registers, residence certificates, tax certificates and for registering personal seals.

\*Please note that we cannot handle procedures related to the My Number Card or resident transfers (moving in, moving out, etc.).

Various personal documents can be obtained at convenience stores and online using your My Number Card.(For details, please scan the QR code below)



▲ Issuance at Convenience Stores



▲ Online Issuance

**Inquiries** Shimin Ka

☎ 0748-69-2138 ☎ 0748-65-6338



Notice

### My Number Card Now Connects Health Insurance and Medical Welfare Benefit Certificates/Subsidy Certificates

マイナ保険証と「福祉医療費受給券・助成券」の一体化をすすめています

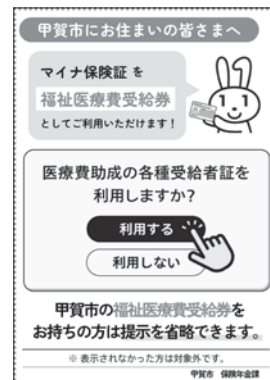
From April, you will be able to use the Koka City Welfare Medical Fee Subsidy System by showing your My Number health insurance card at certain medical institutions instead of using paper Medical Welfare Benefit Certificates/Subsidy Certificates\*.

Currently, only a limited number of medical institutions accept this system, but more are expected to be added in the future.

\*Paper subsidy certificates will continue to be issued. Please show your paper subsidy certificate at medical institutions that do not yet support the system.

**Inquiries** Hoken Nenkin Ka

☎ 0748-69-2142 ☎ 0748-63-4618



▲ Look for this poster!



City website ▶

## Editing & Publishing

### Koka City Hall

6053, Minakuchi, Minakuchi cho, Koka city, 528-8502

☎ 0748-65-0650 ☎ 0748-63-4086

Business Hours: 8:30-17:15 (Except extended business hours on Tuesdays)



Information on Koka City is also available on the city's website and Facebook!

**Koka City Website**

<https://www.city.koka.lg.jp/>

**Koka City Facebook**

<https://www.facebook.com/city.koka>

Koka City Website



Koka City Facebook

