



Daily Life & Employment Consultation

Specifically for foreign residents residing and/or working in Koka City, consultations on municipal housing, loan system, welfare and employment will be available. Portuguese and Spanish translators will be available to better assist you during the consultation.

Date: **July 4th (Mon), August 8th (Mon), September 5th (Mon)**

Time: **1:30pm to 4:00pm**

Location: **Kizuna, 1st floor Lobby (Kokashi Minakuchicho, Minakuchi 5676)**

※**No reservation necessary**

Inquiry: **Shoko Seisakuka (Commerce & Tourism Division) at 65-0710.**

July Taxes & Fees (7月の納税)

This month's taxes are the following:



Kotei Shisan Zei (Fixed Asset Tax)

Kokumin Kenkou Hoken Zei (National Health Insurance Tax)

Hoiku Ryo (Childcare Fee)

Yochien Shiyou Ryou (Kindergarten Fee)

Nogyo Shuraku Haisui Shiyou Ryou (Rural Community Sewage Fee)

Kaigo Hoken Ryo (Nursing Care Fee)

Koki Koreisha Iryo Hoken Ryou (Medical Insurance for the Elderly)

Due date for taxes is August 1st, 2011

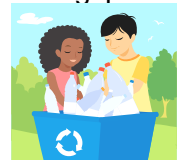
Not sure how to separate plastics?

Quick Reference on Separating Plastic Wastes



Of all the plastic household waste collected by the waste management, 30 percent of plastic waste is removed from the recycles as non recyclable plastics. Then, these non recyclable waste plastics will be separated into either combustibles or landfills. The number one reason why many plastic wastes end up becoming combustibles/landfills is because people throw away plastics without rinsing off remains of food. For your future reference, please be advised on the following points when separating plastic household waste:

- ① **Is it made out of plastics?** (paper label can be left attached to the plastics)
- ② **Did you rinse off remains of food and/or dirt?**



Please rinse off any food remains if possible. In case food remains do not come off easily after rinsing with water, then please discard it as combustible. Starting from September 1st, small plastic household waste bags will be available for purchase.

Volume: 30 Liters (was 60 liters)

Price: ¥180 for 10 bags (was ¥250 for 10 bags)



For the complete list of stores selling the waste plastic bags, please visit Koka City homepage or contact the Living and Environmental Affairs Division (Seikatsu Kankyo Ka) at (phone) 65-0690 or (FAX) 63-4582

Self Defense Class

Let's learn how to defend ourselves from danger while abroad!

Date: **July 17th (Sun)**

Morning Session: 10am to 12pm

Afternoon Session: 2pm to 4pm

Location: **Kizuna, 2nd floor**

Instructor: **Mr. Yamaguchi**

* Please come in comfortable clothes



Applicants: **20 years old and above**

*Accepting 10 applicants per session

Fee: **¥500 for KIS members**

¥800 for non-KIS members

Inquiry: **Koka International Society**

Phone & FAX: **63-8728**

Health Checkup Schedule for July

Exam	Date of Birth	Exam Date	Location	Hours	What to Bring
Infants up to 4 months	March 2011	7 /28 (Thrs)	Minakuchi HC	1:00 pm ~ 1:30 pm	Maternity record book, questionnaire, bath towel, diapers, change of clothes, milk for nursing if necessary
		7 /13 (Wed)	Konan HC		
10 months	August 2010	7 /14 (Thrs)	Minakuchi HC	1:00 pm ~ 1:30 pm	Maternity record book, questionnaire, bath towel, diapers, change of clothes, milk for nursing if necessary
		7 /27 (Wed)	Koka HC		
1 year and 8 months	November 2009	7 /25 (Mon)	Minakuchi HC	1:00 pm ~ 1:30 pm	Maternity record book, questionnaire
		7 /6 (Wed)	Koka HC		
2 years and 6 months	December 2008	7 /27 (Wed)	Minakuchi HC	9:00am ~ 9:30am	Maternity record book, questionnaire, questionnaire about child's hearing ability
		7 /6 (Wed)	Koka HC		
3 years and 6 months	December 2007	7 /11 (Mon)	Minakuchi HC	1:00 pm ~ 1:30 pm	Maternity record book, questionnaire
		7 /5 (Tue)	Konan HC		

*If you plan on taking an exam at a Hoken Center outside of your area, please contact Health Promotion Division (65-0703) 7 days in advance.

*If you reside in Tsuchiyama or Shigaraki and cannot make to the health exam location, please call Health Promotion Division (65-0703) 7 days in advance.

*Checkup for hearing ability is given at the point of 2 years and 6 months old.

*Detailed information will be either distributed at the health checkup for 1 and 8 months old or published in the "baby and infant health checkup questionnaire". Please read it carefully and perform "whispering test" and visit nearby by Hoken Center.

For more information

Kenko Suishin Ka / Health Promotion Division
◆TEL: 0748-65-0703 / FAX:0748-63-4591

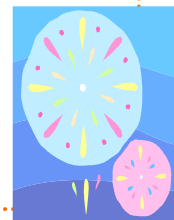
Shigaraki Hoken Center
◆TEL: 0748-82-3113 / FAX:0748-82-3138

Minakuchi Hoken Center
◆TEL: 0748-62-5336 / FAX:0748-62-5418

Tsuchiyama Hoken Center
◆TEL: 0748-66-1105 / FAX:0748-66-1564

Konan Hoken Center
◆TEL: 0748-86-5934 / FAX:0748-86-5974

Koka Hoken Center
◆TEL: 0748-88-6556 / FAX:0748-88-6557



Quick Information



Koka Ninja Academy

Date: July 17th (Sun)

10 am to 3 pm

Location: Konan Plala



School Festival

Ninja Play: Throw Ninja stars, blow dart, decoding messages, Ninja puzzle, Ninja costume party (with fee)

Events: Ninja show, gathering of "Yuru kyara", Konan Taiko

Products: introducing products & produces from Koka and Iga, snacks, Nintama products

Special School for Elementary School students

Challenge 5 Ninja competitions and get a certificate of mastership!!

- Throw Ninja Stars, blow dart, Ninja quiz, balance beam

※Participants will receive a free movie ticket for the live-action version of "Nintama Rantarō" movie.

Fee: 1000 yen (collected on the day of the event)

Participants: 100. Drawing if more than 100 people.

Application due date: July 7th (Thrs).

To apply, please visit Koka Tourist Association home page at <http://www.koka-kanko.org/>

Inquiry: Tourism Strategy and Promotion Division at 65-0708 or Koka Tourism Association at 60-2690

Accepting Application for the National Pension Insurance Fee Exemption

For national pension, there is a system in which you can be exempted/extended from paying National Health Insurance due to financial difficulties. For more details, please contact **Insurance and Pension Division at 65-0688**

Where to Apply:

- at Insurance and Pension Division in City Hall
- Kusatsu Pension Service National Pension Div

Required documents:

- Pension book
- Personal seal
- Tax certificate (if you did not have address in Koka City as of January 1st, 2011)
- A copy of proof/certificate of unemployment issued by a public institution (If you are retired)



Read "aiKoka" newsletter

ONLINE!! Visit us at

<http://www.city.koka.shiga.jp/english>

At this site, you can also find out more about Koka, city services, sightseeing, health coverage, life in Koka etc. English interpreter is available for your convenience from 8:30 am to 5:15 pm.

Koka Regional Community Promotion Div.

Phone: 0748-65-0604

E-mail: koka41176@city.koka.lg.jp